



An ACS Brand

WALL MOUNT HEAT PUMP PRODUCT DATA SHEET

11 EER 1.5 - 5 Ton Vertical Packaged Wall Mount Heat Pumps

**EAH1020H-1024H-1030H-1036H
1042H-1048H-1060H**

(High Efficiency Single Stage Cooling)

EAH2024H-2030H-2036H-2042H-2048H-2060H

(High Efficiency 2-Stage Cooling)

General Description

The Eubank® EAH family of wall mounted heat pumps are the ideal HVAC system for a wide variety of applications. The exterior mounting means that no valuable interior space is required. Eubank EAH heat pumps are packaged units – the refrigerant piping and internal wiring are factory assembled and thoroughly tested. All components are readily accessible for easy service and maintenance. The energy efficient operation keeps operating costs to a minimum and makes the Eubank heat pumps ideal problem solvers for a wide variety of applications, including offices, classrooms and telecommunication shelters.

► Eubank Heat Pumps Are Available To Meet Any Budget Or Efficiency Requirement:

• EAH Single Stage Models

Eubank heat pumps meet all federal efficiency requirements with an Energy Efficiency Ratio (EER) of 11. Single stage Eubank EAH heat pumps are available in cooling capacities of 1½, 2, 2½, 3, 3½, 4 & 5 tons (20,000 to 60,000 BTUH).

• EAH 2-Stage Models

These models feature a 2-stage compressor which can reduce energy costs by more precisely matching the cooling capacity to the heat load with first stage cooling approximately 65% of the total cooling capacity. This results in Energy Efficiency Ratios (EER's) of up to 11.00 and an Integrated Part Load Value (IPLV) of up to 15.00. EAH 2-Stage models are available in cooling capacities of 2, 2½, 3, 3½, 4 & 5 tons (24,000 to 60,000 BTUH).

► Outside Air for Ventilation or Free Cooling

A full range of accessories and options allows Eubank heat pumps to be optimized for each application. For classrooms, a complete range of ventilation options are available to meet the fresh air requirements of the ASHRAE 62 standard, "Ventilation for Acceptable Indoor Air Quality". Where cooling is required during cool or cold weather, e.g., telecommunications shelters, a factory installed economizer should be used. To insure proper operation and optimum performance, all outside air ventilation packages are non-removable, factory installed and factory calibrated.

► Safety Listed and Energy Certified

All Eubank heat pumps conform to UL/CSA standard 60335-1 and 60335-2-40 and CAN/CSA C22.2, No. 236-11. For energy efficiency and performance, the units are tested and rated in accordance to the ANSI/AHRI (Air-Conditioning Heating and Refrigeration Institute) Standard 390 (Single Package Vertical Units). All units meet or exceed the efficiency requirements of ANSI/ASHRAE/IESNA 90.1.2016. Eubank heat pumps are commercial units and are not intended for use in residential applications.



EAA1036H



FEATURES AND BENEFITS

Meets DOE Efficiency Requirements

- All Models 11EER
- All Models 3.3 COP

Next Generation R-454B Refrigerant

- 78% Lower GWP than R-410A
- Non-Ozone Depleting Refrigerant
- Synthetic Lubricant
- Reduced Compressor Wear

High Efficiency and Reliability

- No Wall Mount Heat Pump is More Efficient
- Optional Economizer Reduces Energy Usage
- High Efficiency Compressor and Lanced Coil Fins
- Liquid Line Temperature Monitoring & Control
- Suction Line Temperature Monitoring & Control

Ease of Installation and Service

- Single Point Power Entry
- Built-In Mounting Flanges and Internal Disconnect
- Standard Access Valves and Filters, Status LEDs

Eubank Heat Pump Features

- **High Efficiency**
 - Scroll compressors are standard on all units.
 - Lanced fins and rifled tubing on the indoor & outdoor coils maximize heat transfer.
 - Electronically commutated indoor blower motor on all models
- **Engineered Reliability with On Board Configuration Menu and Fault Notification.**
 - PC board simplifies wiring, consolidates several of the electrical functions in one device.
 - High refrigerant pressure switch with lockout relay protects the compressor in the event of insufficient condenser air flow.
 - High pressure switch and low pressure sensor with lockout protects refrigerant circuit.
 - Time delay for short cycle protection.
- **Ease of Installation**
 - Sloped top with flashing eliminates need of rain hood.
 - Built-in mounting flanges facilitate installation and minimize chance of water leaks.
 - Factory installed phase monitor is standard on all 3Ø units and will turn the air conditioner off if power supply is not phased properly.
 - Factory installed disconnect on all units, including 460v. models.
 - Outside air hood included with each unit.
 - Single Point Power Entry Complies with latest edition of U.L. Standard 60335-2-40.
- **Rugged Construction**
 - Baked on beige finish over galvaneel steel on exterior sheet metal.
 - Copper tube, aluminum fin evaporator and condenser coils.
 - Corrosion resistant Dacromet® external fasteners.
- **Designed for Operation on Generator Power**
 - All Eubank single & three phase air conditioners are designed to operate on Generator Power. See *Summary Electrical Ratings* for your specific model
- **Ease of Service**
 - Control board on-board display indicates fault conditions.
 - Refrigerant access valves are standard
 - All major components are readily accessible
 - Front control panel allows easy access and complies with NEC clearance codes on side by side units.
 - Major components accessible from either side.

Options for Outside Air for Ventilation

ASHRAE standard 62 requires 15 cfm of outside air per occupant of a classroom. To meet this requirement, Eubank offers seven ventilation packages for every budget and requirement.

➤ **Configuration “C”: Up to 100% Modulating Economizer**

The economizer reduces the cost of air conditioning by using outside air when acceptable to cool the room (Free Cooling). The factory installed Eubank® economizer has integral pressure relief.

Control Board Logic: Upon a “Call for Cooling”, the economizer control board calculates whether the HVAC operates in economizer mode or mechanical cooling mode based on outdoor temperature (dry bulb) or temperature/humidity (enthalpy). When outdoor conditions are favorable for economizer cooling, the damper drives open and modulates to maintain a 55°F mixed air temperature through the supply grille. When outdoor conditions are not favorable for economizer cooling, the economizer damper remains closed, and the HVAC unit will operate in mechanical cooling mode.

Features Designed for Telecommunication applications:

Hydrogen Fault Input: When 24VAC is applied to the Emergency Ventilation (EV) input, the economizer board forces the damper to open 100% for emergency ventilation. The compressor does not operate during Hydrogen Fault/Emergency Ventilation.

Forced Mechanical Cooling: When 24VAC is applied to the FC input of the economizer board, the economizer damper is forced closed, and the HVAC will operate in mechanical cooling mode. This is considered as economizer override in the event economizer cooling is not sufficient for the heat load. Thermostat must provide the fan “G” signal to HVAC to activate the indoor blower.

Economizer Status: The economizer board has contacts that when used with the Marvair CommStat 4 Telecom HVAC Controller, change state to provide feedback to the CommStat 4 to indicate when the HVAC is in economizer mode versus mechanical cooling mode. This feedback allows the CommStat 4 to initiate the forced cooling feature to override economizer cooling and force mechanical cooling.

When used with minimum position potentiometer (optional), the Eubank® economizer can meet requirements of ASHRAE Std. 62.

➤ **Configuration “D”: Two-Position Motorized Fresh Air Damper w/Pressure Relief Ventilation**

Control Board Logic: The 92589 control board allows the position of the “D” damper to be set for desired outside air intake from fully closed to fully open. Setting 15 of the control board configuration menu allows the user to set the position from 20 (2VDC / Closed) to 100 (10VDC 100% open). The damper position can be adjusted in 1VDC increments to any position from closed to 100% open as required.

Operation: Anytime the indoor blower operates, the damper drives open to the position selected in the control board configuration menu setting 15. When the indoor blower stops operation the motorized damper spring returns to the fully closed position.

Note: This circuit does not interrupt the compressor or heater operation.

➤ **Configuration “E”: Two-Position Motorized Fresh Air Damper w/Pressure Relief Ventilation & Independent Control**

Control Board/Factory Installed Relay Logic: The 92589 control board allows the position of the “E” damper to be set for desired outside air intake from fully closed to fully open. Setting 15 of the control board configuration menu allows the user to set the position from 20 (2VDC / Closed) to 100 (10VDC 100% open). The damper position can be adjusted in 1VDC increments to any position from closed to 100% open as required.

Operation: Upon a “Call for Motorized damper” via a 24V signal from an external user-installed device, the motorized damper opens to the position selected in the control board configuration menu setting 15 and the indoor blower operates. A 24VAC signal {sourced from LVTB 24VAC “R” and supplied through a user-provided Normally Open (NO) contact} activates (opens) the Motorized Damper and connected Relief Damper. When the 24VAC signal is removed, the motorized damper spring returns to the fully closed position and the indoor blower stops operation. The motorized damper Does NOT open when there is a call for the indoor fan (G).

Note: This circuit does not interrupt the compressor or heater operation.

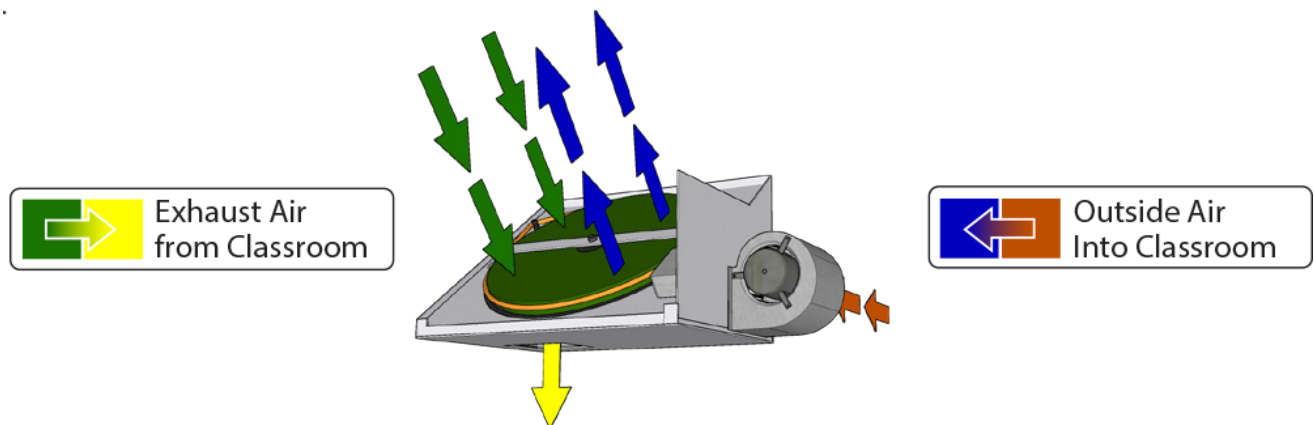
➤ **Configuration “H”: GreenWheel® ERV Energy Recovery Ventilator (Optional only for EAH1030/2030 - EAH1060/2060)**

Allows independent control of the exhaust and intake blowers. When used, the standard speed controller operates the intake blower and the optional second controller, the exhaust blower. Individual blower control allows positive pressurization of the classroom. Field or factory installed.

The Eubank GreenWheel® ERV is a total energy (both sensible and latent) wheel that reduces both construction and operating cost while ventilating the classroom to ASHRAE 62-1999 requirements. The use of the GreenWheel ERV reduces the energy load of the outside air. Exhausting stale, inside air keeps indoor pollutants and harmful gases to a minimum. The Eubank GreenWheel ERV has been tested and certified according to ARI Standard 1060.

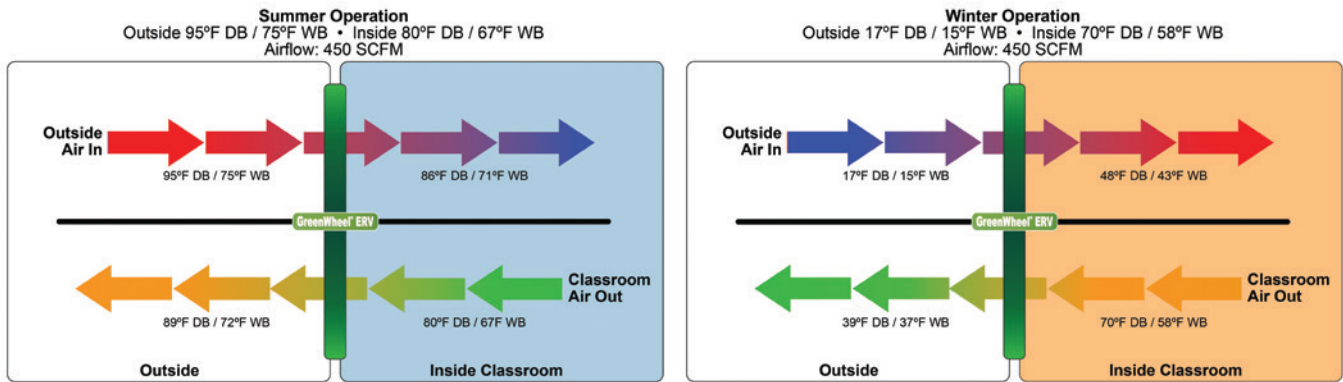
How It Works - During the summer, cool dry air from the classroom is exhausted through the GreenWheel ERV to the outside. As the air passes through the rotating wheel, the desiccant becomes cooler and drier. Simultaneously, hot humid air is being pulled across the rotating wheel. The cool, dry desiccant absorbs moisture and heat from the incoming air. The cooler, drier air is mixed with the return air from the classroom and distributed throughout the room.

In the winter, warm moist air is exhausted through the GreenWheel ERV to the outside. As the air passes through the rotating wheel, the desiccant becomes warmer and absorbs moisture. Simultaneously, cold dry air is being pulled across the rotating wheel. The cold, dry air absorbs heat and moisture from the desiccant. The warmed air is mixed with the return air from the classroom and distributed throughout the room.



Quality Components - The GreenWheel ERV Ventilation package consists of the GreenWheel cassette, an incoming air blower, an exhaust air blower, an air filter for the incoming air and one fan speed controller that controls the speed of both blower motors simultaneously. As an option, a second fan speed controller can be factory installed for independent control of the exhaust air motor and positive pressurization of the classroom. Also, an optional filter on the exhaust air is available on selected models. Please consult your Eubank representative for details. The two

blowers simultaneously pull fresh air from outside and exhaust air from the classroom through the rotating wheel. The air streams are separated by an insulated partition so that the incoming fresh air is not mixed with the exhaust air. Two variable speed blowers ensure that up to 450 CFM of outside air can be brought into the room and the indoor air is properly exhausted. Variable speed blowers permit that the desired quantity of outside air is delivered into the room. Optional independent exhaust air blower control allows positive pressurization of the classroom, i.e., more outside air can be introduced through the GreenWheel ERV than is exhausted.



GreenWheel® Energy Recovery Ventilator Performance

SCFM* of Outside Air	Energy Conserved, BTUH					
	95° DB/73° WB Outside • 80° DB/67° WB Inside			95° DB/80° WB Outside • 80° DB/67° WB Inside		
	Sensible	Latent	Total	Sensible	Latent	Total
225	2,900	1,100	4,000	2,900	6,400	9,300
250	3,100	1,200	4,300	3,100	6,900	10,000
325	3,700	1,400	5,100	3,700	8,100	11,800
400	4,200	1,500	5,700	4,200	9,100	13,300
450	4,500	1,600	6,100	4,500	9,700	14,200

SCFM* of Outside Air	Energy Conserved, BTUH								
	90° DB/74° WB Outside • 75° DB/64° WB Inside			80° DB/70° WB Outside • 75° DB/64° WB Inside			60° DB/54° WB Outside • 70° DB/58° WB Inside		
	Sensible	Latent	Total	Sensible	Latent	Total	Sensible	Latent	Total
225	2800	3600	6400	900	2800	2700	1900	200	2100
250	3000	3800	6800	1000	3000	4000	2000	200	2200
325	3600	4500	8100	1200	3500	4700	2400	200	2600
400	4100	4900	9000	1400	3800	5200	2700	300	3000
450	4300	5200	9500	1400	4000	5400	2900	300	3200

SCFM* of Outside Air	Energy Conserved, BTUH								
	40° DB/36° WB Outside • 70° DB/58° WB Inside			20° DB/18° WB Outside • 70° DB/58° WB Inside			0° DB/7° WB Outside • 70° DB/58° WB Inside		
	Sensible	Latent	Total	Sensible	Latent	Total	Sensible	Latent	Total
225	5600	3300	8900	9300	4900	14200	13000	5700	18700
250	6000	3600	9600	10000	5300	15300	14000	6100	14100
325	7200	4200	11400	12000	6200	18200	16700	7100	23800
400	8100	4600	12700	13500	6800	20300	18900	7900	26800
450	8600	4800	13400	14400	7100	21500	20100	8200	28300

*SCFM = Standard Cubic Feet per Minute

For performance of the GreenWheel® ERV at conditions other than those shown, please contact your Eubank® representative or the factory.

For performance of the GreenWheel ERV at conditions other than those shown, please contact your Eubank representative or the factory.

- **Configuration “N”: Barometric Fresh Air Damper (Standard)**
Barometric damper capable of up to 15% of rated airflow of outside air; field adjustable, no pressure relief.
- **Configuration “T”: Title 24 Compliant Economizer & Controls**
California Title 24 compliant economizer and associated controls.

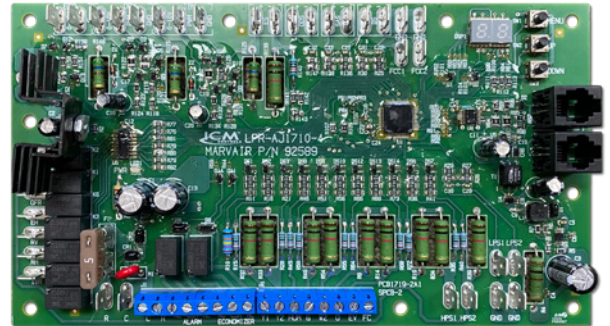
Heat Pump PC Board

► Electronic Control Board

The exclusive Printed Circuit Board (PCB) in base model Eubank heat pumps sets the standard for the industry in terms of flexibility, reliability, and performance. This UL certified component is engineered to optimize Heating, Cooling and Dehumidification operation while communicating valuable information to the end user.

Special Features Include:

- Improved HVAC System Reliability (Built In Sequence / Timer Functionality And Simplified Wiring)
- On Board Configuration Menu With Adjustments Of Various Functions and Setpoints
- 2-Stage Compressor Operation
- Independent Indoor Blower Speed Adjustments For 1st Stage Cooling, 2nd Stage Cooling, Electric Heat And Dehumidification (Optimize Latent and Sensible Capacity)
- Built-In Remote Communication (Monitor and Control Via MODBUS Qty. 2 RJ11 Ports)
- Alarm Status and Fault Display(Drastically Reduces Troubleshooting Time and System Downtime)
- Sensors To Monitor Refrigerant Temperature Of The Low Pressure Circuit and Liquid Line Circuit
- Economizer Control With Adjustments For Both Enthalpy Or Dry Bulb Sensor
- Economizer Status Output Contacts
- Emergency Ventilation Control (Systems Equipped with Ventilation Package)
- Forced Cooling (Overrides Economizer Operation)
- Dehumidification Control (Systems Equipped With Electric Reheat Or Hot Gas Reheat Dehumidification)
- Lockout Contacts (Normally Open Or Normally Closed)
- Alarms Communicated Via MODBUS



Protection of the Refrigerant Components

► High Refrigerant Pressure Switch

The high pressure switch is located on the liquid line. It is electrically connected to the PC board and will turn the compressor off if the pressure rises above the set point twice on the same call for cooling or heat-pump heating. This protects the compressor if airflow is significantly reduced or lost through the coil performing the condenser function.

► Low Pressure Sensor

The loss of charge low pressure sensor is located on the common suction line. It is electrically connected to the PC board and will turn the compressor off if the pressure drops below the set point twice on the same call for cooling or heat-pump heating. This protects the compressor if airflow is significantly reduced or lost through the coil performing the evaporator function or there is a loss of refrigerant.

Eubank EAH Heat Pump Options

Eubank options can be used to provide optimum performance over a full range of operating conditions.

► Adjustable Outdoor Thermostat

Will not allow electric resistance heat to be energized unless the outdoor temperature is below the desired set point. Field or factory installed. Available on all EAH units.

► Energy Management System (EMS) Relay Kit

Relay to control the unit. Available in 24, 120 or 240 VAC. Field or factory installed.

► Electric Reheat

Control provides simultaneous operation of compressor when in cooling mode and the electric elements to provide dehumidification without over cooling the room. The electric element (kW) must be properly sized for each model for proper operation. Factory installed. Available on all EAH units. Consult factory for details.

➤ **Cabinet Color**

Eubank heat pumps are available in six different cabinet colors. The standard colors are Marvair® beige, white, gray and Carlsbad Canyon (brown). The standard cabinet's sides, top and front panels are constructed of 20 gauge painted steel. Contact your Eubank representative for color chips. Custom colors are also available; contact Eubank for details.

Two stainless steel cabinet constructions are available:

Stainless Steel Exterior (Option "5"): This option replaces all standard exterior painted surfaces with stainless steel. This option also replaces the standard unpainted compressor base of the unit and exterior cabinet screws with stainless steel. No other standard construction surfaces are stainless steel in this option, unless listed in this description. Back panel is not stainless steel with this option. This option is designed to give a more economical alternative to full stainless steel, and still offer an enhanced level of protection. For further corrosion protection, please see our "A" offering at full stainless on all metal components.

Stainless Steel Unit (Option "A"): This option replaces all interior and exterior steel sheet metal parts with stainless steel. All galvanized and painted steel surfaces found in the standard unit are stainless steel with this option. All cabinet screws are stainless steel. No other standard construction surfaces are stainless steel, unless listed in this description. This option is designed to give our most robust protection against steel corrosion.

➤ **Extended Warranty**

A first-year labor (Silver), and a two-year labor (Gold) are available. See www.EubankWallMount.com for optional warranty details.

➤ **Compressor Sound Jackets**

Reduces sound of compressor.

➤ **Anti-Microbial Light**

A germicidal UV light destroys toxic bacteria, viruses and mold on the indoor air coil.

➤ **Cold Plasma Air Purification Device**

Installed inside the Scholar 2.0 unit, this device neutralizes odors, kills mold, bacteria and viruses. It also helps to control allergens*, asthma*, smoke and airborne particles.

*These statements are based on customer testimonials and have not been evaluated by the FDA.



Cold Plasma Air Purifier

Special Application Packages and Coil Coatings

➤ **Protective Coating Packages**

Typically, only non-economizer units are used in corrosive environments, but all Eubank air conditioner are available with corrosion protection. Two corrosion protection packages are offered - one for the condenser section (Coastal Environmental Package) and the other for the entire unit (Coat-All Package).

The Coastal Environmental Package includes:

- Corrosion resistant fasteners
- Sealed or partially sealed condenser fan motor
- Protective coating applied to all exposed internal copper and metal in the condenser section
- Protective coating on the condenser coil (Luvata Insitu®) contains ES2 (embedded stainless steel pigment) technology.

The Coat all Package includes all of the above, plus:

- Protective coating on the evaporator coil (Luvata Insitu®) contains ES2 (embedded stainless steel pigment) technology
- Protective coating on exterior and interior components and sheet metal.

Note 1: The insulated internal sheet metal and the internal control box are not coated.

Note 2: The corrosion prevention coating can not be applied to stainless steel.

➤ **Protective Coil Coatings**

The Condenser Coil or the Evaporator Coil or Both can be coated. Coating the Evaporator Coil in not common. For harsh conditions, e.g., power plants, paper mills or sites where the unit will be exposed to salt water, the coils should be protected by a protective coating.

Note: Cooling capacity may be reduced by up to 5% on units with coated coils.

Accessories

► Thermostats for Single Stage and 2-Stage Heat Pumps

See the *Marvair Thermostats and Controllers Product Data Sheet* for the thermostats for use with Eubank heat pumps.

► Grilles

Description	Size	Eubank P/N
<i>For the EAH1020H/1024H & EAH2024H</i>		
Double Deflection, Aluminum Supply Grille	20" x 8" (509mm x 203mm)	80674
Aluminum Return Grille	20" x 12" (509mm x 305mm)	80677
Return Filter Grille	20" x 12" (509mm x 305mm)	80671
<i>For the EAH1030H/1036H & EAH2030H/2036H</i>		
Double Deflection, Aluminum Supply Grille	28" x 8" (711mm x 203mm)	80675
Aluminum Return Grille	28" x 14" (711mm x 356mm)	80678
Return Filter Grille*	28" x 14" (711mm x 356mm)	80672
<i>For the EAH1042H/1048H/1060H & EAH2042H/2048H/2060H</i>		
Double Deflection, Aluminum Supply Grille	30" x 10" (762mm x 254mm)	80676
Aluminum Return Grille	30" x 16" (762mm x 406mm)	80679
Return Filter Grille	30" x 16" (762mm x 406mm)	80673
Note: Return filter grilles should be used when the 2" (51mm) filter in the EAH unit is not accessible from the exterior of the building. Filter used in the return filter grille is a 1" (25mm) thick filter. The return filter grille is not recommended for use with the EAH heat pumps with economizers.		

EER Comparison by Model

Nominal Cooling Capacity (BTUH)	Basic Model	EER	Nominal Cooling Capacity (BTUH)	Basic Model	EER
20,000	EAH1020H	11.00	42,000	EAH1042H	11.00
24,000	EAH1024H	11.00		EAH2042H	11.00
	EAH2024H	11.00	48,000	EAH1048H	11.00
30,000	EAH1030H	11.00		EAH2048H	11.00
	EAH2030H	11.00	60,000	EAH1060H	11.00
36,000	EAH1036H	11.00		EAH2060H	11.00
	EAH2036H	11.00			

Air Flow (Cubic Feet per Minute)

Model Number	External Static Pressure (WET COIL)					
	0.10	0.20	0.25	0.30	0.40	0.50
EAH1020H/1024H/2024H	889	831	820	801		
EAH1030H/2030H	1152	1122	1100	1075	1028	
EAH1036H/2036H	1265	1222	1200	1175	1133	
EAH1042H/2042H		1650	1585	1520	1450	1360
EAH1048H/2048H		1693	1650	1619	1591	1529
EAH1060H/2060H		1693	1650	1619	1591	1529

Air flow ratings of 208-230v. Units are at 230v. Air flow ratings of 480 v. units are at 460 volts. Operation of units at a different voltage from the rating point will affect air flow.

Eubank EAH Single Stage Heat Pump Certified Ratings & Performance

Efficiency and Capacity Ratings at ANSI/AHRI Standard 390 - EAH Heat Pumps

Model Number	EAH1020H	EAH1024H			EAH1030H			EAH1036H			EAH1042H			EAH1048H			EAH1060H		
	A	A	C	D	A	C	D	A	C	D	A	C	D	A	C	D	A	C	D
Cooling BTUH¹	20,000	24,000			29,000			35,000			42,000			46,000			57,000		
EER²	11	11			11			11			11			11			11		
High Temperature Heating³	20,000	24,000			27,000			30,000			34,000			42,000			51,000		
High Temperature COP⁴	3.3	3.3			3.3			3.3			3.3			3.3			3.3		
Rated Air Flow (CFM⁵)	760	820			1,150			1,200			1,350			1,700			1,800		

¹Cooling is rated at 95°F (35°C) outdoor and 80°F DB/67°F WB (26.5°C DB/19.5°C WB) return air.
²EER = Energy Efficiency Ratio
³High Temperature Heating & COP are rated at 47°F DB/43°WB (8.3°C DB/6.1°C WB) outdoor and 70°F (21.1°C) return air.
⁴COP = Coefficient of Performance
⁵CFM = Cubic Feet per Minute
Ratings are with no outside air. Performance will be affected by altitude. Ratings are at 230 volts for 208/230 volt units ("A" & "C" models) and 460 volts for "D" models. Operation of units at a different voltage from that of the rating point will affect performance and air flow.

Sensible Total Heat Ratio @ 95°F (35°C) Outside Air DB - EAH Heat Pumps

Model Number	EAH1020H	EAH1024H			EAH1030H			EAH1036H			EAH1042H			EAH1048H			EAH1060H		
	A	A	C	D	A	C	D	A	C	D	A	C	D	A	C	D	A	C	D
Total Capacity	20,000	24,000			29,000			35,000			42,000			46,000			57,000		
Sensible Heat Ratio	0.80	0.80			0.70			0.70			0.70			0.70			0.60		
Sensible Capacity	15,000	18,600			21,500			24,500			27,400			31,000			36,900		
Rated Air Flow (CFM¹)	760	820			1,150			1,200			1,350			1,700			1,800		

¹CFM=Cubic Feet per Minute
Sensible Heat Ratios based upon ANSI/AHRI std. 390 outdoor conditions of 95°F (35°C) outdoor and 80°F DB/67°F WB (26.5°C DB/19.5°C WB) return air.

Cooling Performance (BTUH) at Various Outdoor Temperatures - EAH Heat Pumps

Model Number	Outdoor Temperature											
	75°F/24°C	80°F/26.5°C	85°F/29°C	90°F/32°C	95°F/35°C	100°F/38°C	105°F/40.5°C	110°F/43.3°C	115°F/46°C	120°F/49°C	125°F/52°C	130°F/54°C
EAH1020H	23,200	22,400	21,600	20,800	20,000	19,200	18,400	17,600	17,200	16,840	16,480	16,120
EAH1024H	27,840	26,880	25,920	24,960	24,000	23,040	22,080	21,120	20,640	20,208	19,776	19,344
EAH1030H	33,640	32,480	31,320	30,160	29,000	27,840	26,680	25,520	24,940	24,418	23,896	23,374
EAH1036H	40,600	39,200	37,800	36,400	35,000	33,600	32,200	30,800	30,100	29,470	28,840	28,210
EAH1042H	48,720	47,040	45,360	43,680	42,000	40,320	38,640	36,960	36,120	35,364	34,608	33,852
EAH1048H	53,360	51,520	49,680	47,840	46,000	44,160	42,320	40,480	39,560	38,732	37,904	37,076
EAH1060H	66,120	63,840	61,560	59,280	57,000	54,720	52,440	50,160	49,020	47,994	46,968	45,942

Based upon ANSI/AHRI std. 390 return air conditions of 80°F DB/67°F WB (26.5°C DB/19.5°C WB). Return air at rated air flow.

Heating Performance (BTUH) at Various Outdoor Temperatures - EAH Heat Pumps

Model Number	Outdoor Temperature									
	10°F/-12.2°C	17°F/-8.3°C	20°F/-6.7°C	30°F/-1.1°C	40°F/4.4°C	47°F/8.3°C	50°F/10°C	60°F/15.6°C	70°F/21.1°C	
EAH1020H	10,766	11,333	12,200	15,233	17,833	20,000	20,600	21,500	22,500	
EAH1024H	11,560	13,600	14,640	18,280	21,400	24,000	24,720	25,800	27,000	
EAH1030H	15,130	17,800	18,720	21,940	24,700	27,000	27,810	29,025	30,375	
EAH1036H	15,810	18,600	19,740	23,730	27,150	30,000	30,900	32,250	33,750	
EAH1042H	18,700	22,000	23,340	28,030	32,050	35,400	36,462	38,055	39,825	
EAH1048H	20,400	24,000	25,800	32,100	37,500	42,000	43,260	45,150	47,250	
EAH1060H	22,900	27,000	29,300	37,500	44,600	51,000	51,900	54,300	61,100	

Based upon ANSI/AHRI std. 390 return air conditions of 70°F DB (21.1°C DB). Return air at rated air flow.

Electrical Characteristics - Compressor, Fan, Ventilation & Blower Motors EAH Heat Pumps with Single Stage Compressor

Basic Model	Compressor				Outdoor Fan Motor				Indoor Blower Motor				Ventilation GreenWheel AMPS		
	Type	Volts-Hz-Ph	RLA ¹	LRA ²	Volts-Hz-Ph	RPM ³	FLA ⁴	HP ⁵	Volts-Hz-Ph	RPM ³	FLA ⁴	HP ⁵	OAM ⁶	EXM ⁷	WD ⁸
EAH1020HA	Scroll	208/230-60-1	10.3	60.2	208/230-60-1	1200	3.5	1/3	208/230-60-1	1200	2.8	1/3			
EAH1024HA		208/230-60-1	11.9	67.8	208/230-60-1	1200	3.5	1/3	208/230-60-1	1200	2.8	1/3	1.0	1.0	0.2
EAH1030HA		208/230-60-1	13.5	82.5	208/230-60-1	1200	3.5	1/3	208/230-60-1	1200	4.1	1/2	1.0	1.0	0.2
EAH1036HA		208/230-60-1	14.7	109.0	208/230-60-1	1200	3.5	1/3	208/230-60-1	1050	4.1	1/2	1.0	1.0	0.2
EAH1042HA		208/230-60-1	18.6	123.0	208/230-60-1	1200	5.3	1/2	208/230-60-1	1050	4.1	1/2	1.0	1.0	0.2
EAH1048HA		208/230-60-1	22.4	126.0	208/230-60-1	1200	5.3	1/2	208/230-60-1	1050	4.1	1/2	1.0	1.0	0.2
EAH1060HA		208/230-60-1	25.6	155.0	208/230-60-1	1200	6.3	3/4	208/230-60-1	1050	6.0	3/4	1.0	1.0	0.2
EAH1024HC	Scroll	208/230-60-3	8.3	67.7	208/230-60-1	1200	3.5	1/3	208/230-60-1	1200	2.8	1/3			
EAH1030HC		208/230-60-3	12.8	97.5	208/230-60-1	1200	3.5	1/3	208/230-60-1	1200	4.1	1/2	1.0	1.0	0.2
EAH1036HC		208/230-60-3	12.2	102.8	208/230-60-1	1200	3.5	1/3	208/230-60-1	1200	4.1	1/2	1.0	1.0	0.2
EAH1042HC		208/230-60-3	12.8	102.8	208/230-60-1	1200	5.3	1/2	208/230-60-1	1050	4.1	1/2	1.0	1.0	0.2
EAH1048HC		208/230-60-3	12.8	120.4	208/230-60-1	1200	5.3	1/2	208/230-60-1	1050	4.1	1/2	1.0	1.0	0.2
EAH1060HC	208/230-60-3	18.6	155.0	208/230-60-1	1200	6.3	3/4	208/230-60-1	1050	6.0	3/4	1.0	1.0	0.2	
EAH1024HD	Scroll	460-60-3	5.1	38.1	208/230-60-1	1200	3.5	1/3	208/230-60-1	1200	2.8	1/3			
EAH1030HD		460-60-3	5.1	44.3	208/230-60-1	1200	3.5	1/3	208/230-60-1	1200	4.1	1/2	1.0	1.0	0.2
EAH1036HD		460-60-3	5.8	50.0	208/230-60-1	1200	3.5	1/3	208/230-60-1	1200	4.1	1/2	1.0	1.0	0.2
EAH1042HD		460-60-3	5.8	50.0	208/230-60-1	1200	5.3	1/2	208/230-60-1	1050	4.1	1/2	1.0	1.0	0.2
EAH1048HD		460-60-3	6.0	49.4	208/230-60-1	1200	5.3	1/2	208/230-60-1	1050	4.1	1/2	1.0	1.0	0.2
EAH1060HD		460-60-3	8.3	58.1	208/230-60-1	1200	6.3	3/4	208/230-60-1	1050	6.0	3/4	1.0	1.0	0.2
EAH1024HZ	Scroll	575-60-3	3.8	27.7	208/230-60-1	1200	3.5	1/3	208/230-60-1	1200	2.8	1/3			
EAH1030HZ		575-60-3	4.5	27.1	208/230-60-1	1200	3.5	1/3	208/230-60-1	1200	4.1	1/2	1.0	1.0	0.2
EAH1036HZ		575-60-3	4.5	41.0	208/230-60-1	1200	3.5	1/3	208/230-60-1	1200	4.1	1/2	1.0	1.0	0.2
EAH1042HZ		575-60-3	5.1	41.0	208/230-60-1	1200	5.3	1/2	208/230-60-1	1050	4.1	1/2	1.0	1.0	0.2
EAH1048HZ		575-60-3	5.8	41.0	208/230-60-1	1200	5.3	1/2	208/230-60-1	1050	4.1	1/2	1.0	1.0	0.2
EAH1060HZ	575-60-3	7.7	47.8	208/230-60-1	1200	6.3	3/4	208/230-60-1	1050	6.0	3/4	1.0	1.0	0.2	

¹RLA = Rated Load Amps ²LRA = Locked Rotor Amps ³RPM = Revolutions per Minute ⁴FLA = Full Load Amps
⁵HP = Horsepower ⁶OAM = Outside Air Mover ⁷EXM = Exhaust Air Mover ⁸WD = Wheel Drive Motor
The 460 volt units have a step down transformer for the 230 volt motors.

EAH Heat Pumps Summary Electrical Ratings (Wire and HACR Circuit Breaker Sizing) - Ventilation Configuration:

C: Economizer, Outside Air with Pressure Relief

D: Motorized 2-Position Damper, up to 450 cfm of Outside Air w/Pressure Relief

E: Motorized Damper w/Pressure Relief & Independent Motorized Damper Control

N: Barometric Damper, up to 15% Outside Air

T: Title 24 Compliant Economizer & Controls

Electric Heat		000 = None		040 = 4 kw		050 = 5 kw		060 = 6 kw		080 = 8 kw		090 = 9 kw		100 = 10 kw		120 = 12 kw		150 = 15 kw	
Basic Model	Volts-Hz-Ph	SPPE ³		SPPE ³		SPPE ³		SPPE ³		SPPE ³		SPPE ³		SPPE ³		SPPE ³		SPPE ³	
		MCA ¹	MFS ²	MCA ¹	MFS ²	MCA ¹	MFS ²	MCA ¹	MFS ²	MCA ¹	MFS ²	MCA ¹	MFS ²	MCA ¹	MFS ²	MCA ¹	MFS ²	MCA ¹	MFS ²
EAH1020HA	208/230-60-1	19.2	25	40.0	45	45.2	50	50.4	60	60.8	70			71.3	80				
EAH1024HA	208/230-60-1	21.2	30	42.0	45	47.2	50	52.4	60	62.8	70			73.3	80				
EAH1030HA	208/230-60-1	24.5	35	45.3	50	50.5	60	55.7	60	66.1	70			76.6	80	87.0	90	102.6	110
EAH1036HA	208/230-60-1	26.0	40	46.8	50	52.0	60	57.2	60	67.6	70			78.1	80	88.5	90	104.1	110
EAH1042HA	208/230-60-1	32.7	50	53.5	60	58.7	70							84.7	90	95.2	100	110.8	125
EAH1048HA	208/230-60-1	37.4	50	58.2	70	63.4	80							89.5	100	99.9	100	115.5	125
EAH1060HA	208/230-60-1	44.3	60	65.1	80	70.3	90							96.4	110	106.8	110	122.4	125
EAH1024HC	208/230-60-3	16.7	20					34.7	35			43.7	45			52.8	60	61.8	70
EAH1030HC	208/230-60-3	23.6	35					41.6	50			50.7	60			59.7	60	68.7	70
EAH1036HC	208/230-60-3	22.9	35					40.9	45			49.9	50			58.9	60	68.0	70
EAH1042HC	208/230-60-3	25.4	35					43.4	50			52.5	60			61.5	70	70.5	80
EAH1048HC	208/230-60-3	25.4	35					43.4	50			52.5	60			61.5	70	70.5	80
EAH1060HC	208/230-60-3	35.6	50					53.6	60			62.6	70			71.6	80	80.7	90
EAH1024HD	460-60-3	9.5	15					18.5	20			23.1	25			27.6	30	32.1	35
EAH1030HD	460-60-3	10.2	15					19.2	20			23.7	25			28.2	30	32.7	35
EAH1036HD	460-60-3	11.1	15					20.1	25			24.6	25			29.1	30	33.6	35
EAH1042HD	460-60-3	12.0	15					21.0	25			25.5	30			30.0	30	34.5	35
EAH1048HD	460-60-3	12.2	15					21.2	25			25.7	30			30.2	35	34.8	35
EAH1060HD	460-60-3	16.5	20					25.5	30			30.1	35			34.6	35	39.1	40
EAH1024HZ	575-60-3	7.3	15					14.8	15			18.6	20			22.3	25	26.1	30
EAH1030HZ	575-60-3	8.7	15					16.2	20			20.0	20			23.7	25	27.5	30
EAH1036HZ	575-60-3	8.7	15					16.2	20			20.0	20			23.7	25	27.5	30
EAH1042HZ	575-60-3	10.1	15					17.7	20			21.4	25			25.2	30	29.0	30
EAH1048HZ	575-60-3	11.0	15					18.5	20			22.3	25			26.1	30	29.8	30
EAH1060HZ	575-60-3	14.5	20					22.1	25			25.8	30			29.6	30	33.4	35

S-Circuit - The user can move a pin on the board to control whether the electric heat will operate simultaneously with the compressor (S Circuit – NO) or will not run simultaneously with the compressor (S Circuit – Yes).

¹MCA = Minimum Circuit Ampacity (Wiring Size Amps) ²MFS = Maximum Fuse or HACR Breaker Size ³SPPE = Single Point Power Entry

MCA & MFS are calculated at 230 volts on the 208-230v. (HPA & HPC) models. The 460 volt HPD models are calculated at 460 volts. This chart should only be used as a guideline for estimating conductor size and overcurrent protection. For the requirements of specific units, always refer to the data label on the unit.

EAH Heat Pumps Summary Electrical Ratings (Wire and HACR Circuit Breaker Sizing) - EAH Heat Pumps with the "S" Circuit Enabled and Ventilation Configuration:

C: Economizer, Outside Air with Pressure Relief
 D: Motorized 2-Position Damper, up to 450 cfm of Outside Air w/Pressure Relief
 E: Motorized Damper w/Pressure Relief & Independent Motorized Damper Control
 N: Barometric Damper, up to 15% Outside Air
 T: Title 24 Compliant Economizer & Controls

Electric Heat		000 = None		040 = 4 kw		050 = 5 kw		060 = 6 kw		080 = 8 kw		090 = 9 kw		100 = 10 kw		120 = 12 kw		150 = 15 kw	
Basic Model	Volts-Hz-Ph	SPPE ³		SPPE ³		SPPE ³		SPPE ³		SPPE ³		SPPE ³		SPPE ³		SPPE ³		SPPE ³	
		MCA ¹	MFS ²	MCA ¹	MFS ²	MCA ¹	MFS ²	MCA ¹	MFS ²	MCA ¹	MFS ²	MCA ¹	MFS ²	MCA ¹	MFS ²	MCA ¹	MFS ²	MCA ¹	MFS ²
MAA1020HA	208/230-60-1	19.2	25	23.6	25	28.8	30	34.1	35	44.5	45			54.9	60				
MAA1024HA	208/230-60-1	21.2	30	23.6	30	28.8	30	34.1	35	44.5	45			54.9	60				
MAA1030HA	208/230-60-1	24.5	35	24.9	35	30.1	35	35.4	40	45.8	50			56.2	60	66.6	70	82.2	90
MAA1036HA	208/230-60-1	26.0	40	26.0	40	30.1	40	35.4	40	45.8	50			56.2	60	66.6	70	82.2	90
MAA1042HA	208/230-60-1	32.7	50	32.7	50	32.7	50							56.2	60	66.6	70	82.2	90
MAA1048HA	208/230-60-1	37.4	50	37.4	50	37.4	50							56.2	60	66.6	70	82.2	90
MAA1060HA	208/230-60-1	44.3	60	44.3	60	44.3	60							58.1	60	68.5	70	84.1	90
MAA1024HC	208/230-60-3	16.7	20					20.8	25			29.9	30			38.9	40	47.9	50
MAA1030HC	208/230-60-3	23.6	35					23.6	35			31.2	35			40.2	45	49.2	50
MAA1036HC	208/230-60-3	22.9	35					22.9	35			31.2	35			40.2	45	49.2	50
MAA1042HC	208/230-60-3	25.4	35					25.4	35			31.2	35			40.2	45	49.2	50
MAA1048HC	208/230-60-3	25.4	35					25.4	35			31.2	35			40.2	45	49.2	50
MAA1060HC	208/230-60-3	35.6	50					35.6	50			35.6	50			42.1	50	51.1	60
MAA1024HD	460-60-3	9.5	15					10.4	15			14.9	15			19.4	20	24.0	25
MAA1030HD	460-60-3	10.2	15					11.1	15			15.6	20			20.1	25	24.6	25
MAA1036HD	460-60-3	11.1	15					11.1	15			15.6	20			20.1	25	24.6	25
MAA1042HD	460-60-3	12.0	15					12.0	15			15.6	20			20.1	25	24.6	25
MAA1048HD	460-60-3	12.2	15					12.2	15			15.6	20			20.1	25	24.6	25
MAA1060HD	460-60-3	16.5	20					16.5	20			16.5	20			21.0	25	25.6	30
MAA1024HZ	575-60-3	7.3	15					8.7	15			12.4	15			16.2	20	19.9	20
MAA1030HZ	575-60-3	8.7	15					9.2	15			12.9	15			16.7	20	20.5	25
MAA1036HZ	575-60-3	8.7	15					9.2	15			12.9	15			16.7	20	20.5	25
MAA1042HZ	575-60-3	10.1	15					10.1	15			12.9	15			16.7	20	20.5	25
MAA1048HZ	575-60-3	11.0	15					11.0	15			12.9	15			16.7	20	20.5	25
MAA1060HZ	575-60-3	14.5	20					14.5	20			14.5	20			17.5	20	21.2	25

S-Circuit - The user can move a pin on the board to control whether the electric heat will operate simultaneously with the compressor (S Circuit - NO) or will not run simultaneously with the compressor (S Circuit - Yes).
¹MCA = Minimum Circuit Ampacity (Wiring Size Amps) ²MFS = Maximum Fuse or HACR Breaker Size ³SPPE = Single Point Power Entry
 MCA & MFS are calculated at 230 volts on the 208-230v. (HPA & HPC) models. The 460 volt HPD models are calculated at 460 volts. This chart should only be used as a guideline for estimating conductor size and overcurrent protection. For the requirements of specific units, always refer to the data label on the unit.

Unit Load Amps (Heating) - EAH Heat Pumps with Ventilation Configurations:

C: Economizer, Outside Air with Pressure Relief
 D: Motorized 2-Position Damper, up to 450 cfm of Outside Air w/Pressure Relief
 E: Motorized Damper w/Pressure Relief & Independent Motorized Damper Control
 N: Barometric Damper, up to 15% Outside Air
 T: Title 24 Compliant Economizer & Controls

Basic Model Number	Volts-Hz-Ph	Current Amps		LOAD OF RESISTIVE HEATING - ELEMENTS ONLY (AMPS)										TOTAL MAXIMUM HEATING AMPS							
				(1) ALL HEATING ELEMENTS ARE ON A SEPARATE CIRCUIT										INCLUDES AMPS FROM MOTOR(S) THAT ARE LOCATED ON AN ELECTRICAL CIRCUIT THAT DOES NOT HAVE HEATERS							
		HP ¹	IBM ²	4 kW	5 kW	6 kW	8 kW	9 kW	10 kW	12 kW	15 kW	4 kW	5 kW	6 kW	8 kW	9 kW	10 kW	12 kW	15 kW		
EAH1020HA	208/230-60-1	16.6	2.8	16.7	20.8	25.0	33.3			41.7				19.5	23.6	27.8	36.1		44.5		
EAH1024HA	208/230-60-1	18.2	2.8	16.7	20.8	25.0	33.3			41.7				19.5	23.6	27.8	36.1		44.5		
EAH1030HA	208/230-60-1	21.1	4.1	16.7	20.8	25.0	33.3			41.7	50.0	62.5	20.8	24.9	29.1	37.4		45.8	54.1	66.6	
EAH1036HA	208/230-60-1	22.3	4.1	16.7	20.8	25.0	33.3			41.7	50.0	62.5	20.8	24.9	29.1	37.4		45.8	54.1	66.6	
EAH1042HA	208/230-60-1	28.0	4.1	16.7	20.8	25.0	33.3			41.7	50.0	62.5	20.8	24.9	29.1	37.4		45.8	54.1	66.6	
EAH1048HA	208/230-60-1	31.8	4.1	16.7	20.8					41.7	50.0	62.5	20.8	24.9				45.8	54.1	66.6	
EAH1060HA	208/230-60-1	37.9	6.0	16.7	20.8					41.7	50.0	62.5	22.7	26.8				47.7	56.0	68.5	
EAH1024HC	208/230-60-3	14.6	2.8	9.6	12.0					24.1	28.9	36.1	12.4	14.8				26.9	31.7	38.9	
EAH1030HC	208/230-60-3	20.4	4.1			14.4			21.7			28.9	36.1			18.5		25.8		33.0	40.2
EAH1036HC	208/230-60-3	19.8	4.1			14.4			21.7			28.9	36.1			18.5		25.8		33.0	40.2
EAH1042HC	208/230-60-3	22.2	4.1			14.4			21.7			28.9	36.1			18.5		25.8		33.0	40.2
EAH1048HC	208/230-60-3	22.2	4.1			14.4			21.7			28.9	36.1			18.5		25.8		33.0	40.2
EAH1060HC	208/230-60-3	30.9	6.0			14.4			21.7			28.9	36.1			20.4		27.7		34.9	42.1
EAH1024HD	460-60-3	8.3	1.4			7.2			10.8			14.4	18.0			8.6		12.2		15.8	19.4
EAH1030HD	460-60-3	8.9	2.1			7.2			10.8			14.4	18.0			9.3		12.9		16.5	20.1
EAH1036HD	460-60-3	9.6	2.1			7.2			10.8			14.4	18.0			9.3		12.9		16.5	20.1
EAH1042HD	460-60-3	10.5	2.1			7.2			10.8			14.4	18.0			9.3		12.9		16.5	20.1
EAH1048HD	460-60-3	10.7	2.1			7.2			10.8			14.4	18.0			9.3		12.9		16.5	20.1
EAH1060HD	460-60-3	14.5	3.0			7.2			10.8			14.4	18.0			10.2		13.8		17.4	21.0
EAH1024HZ	575-60-3	6.3	1.1			6.0			9.0			12.0	15.1			7.1		10.1		13.1	16.2
EAH1030HZ	575-60-3	7.5	1.6			6.0			9.0			12.0	15.1			7.6		10.6		13.6	16.7
EAH1036HZ	575-60-3	7.5	1.6			6.0			9.0			12.0	15.1			7.6		10.6		13.6	16.7
EAH1042HZ	575-60-3	8.9	1.6			6.0			9.0			12.0	15.1			7.6		10.6		13.6	16.7
EAH1048HZ	575-60-3	9.6	1.6			6.0			9.0			12.0	15.1			7.6		10.6		13.6	16.7
EAH1060HZ	575-60-3	12.6	2.4			6.0			9.0			12.0	15.1			8.4		11.4		14.4	17.5

¹HP = Heat Pump Unit Amps (includes Indoor Motor amps) ²IBM = Indoor Blower Motor
 Heating kW is rated at 240 volts on the 208-230v. (HPA & HPC) models. Derate heater output by 25% for operation at 208 volts. Heating kW is rated at 480 volts on the HPD models.
 Total heating amps for single phase units with two circuits (#1 and #2) includes both circuits. Total heating and cooling amps includes all motors. Three phase models contain single phase motor loads. Values shown are maximum phase loads. Loads are not equally balanced on each phase.

Eubank EAH 2-Stage Heat Pump Certified Ratings & Performance

Efficiency and Capacity Ratings at ANSI/AHRI Standard 390 - EAH Heat Pumps

Model Number	EAH2024H			EAH2030H			EAH2036H			EAH2042H			EAH2048H			EAH2060H		
	A	C	D	A	C	D	A	C	D	A	C	D	A	C	D	A	C	D
Cooling BTUH ¹	20,600			29,000			33,000			40,000			46,000			56,000		
EER ²	11			11			11			11			11			11		
IPLV ³	14.3			15.5			14.3			14.3			14			14.8		
High Temperature Heating ⁴	21,000			25,000			29,000			35,400			42,000			50,500		
High Temperature COP ⁵	3.3			3.3			3.3			3.3			3.3			3.3		
Rated Indoor Air Flow (CFM ⁶)	950			1,050			1,180			1,350			1,700			1,750		

¹Cooling is rated at 95°F (35°C) outdoor and 80°F DB/67°F WB (26.5°C DB/19.5°C WB) return air.

²EER = Energy Efficiency Ratio

³IPLV = Integrated Part Load Value

⁴High Temperature Heating & COP are rated at 47°F DB/43°F WB (8.3°C DB/6.1°C WB) outdoor and 70°F (21.1°C) return air.

⁵COP = Coefficient of Performance

⁶CFM = Cubic Feet per Minute

Ratings are with no outside air. Performance will be affected by altitude. Ratings are at 230 volts for 208/230 volt units ("A" & "C" models) and 460 volts for "D" models. Operation of units at different voltage from that of the rating point will affect performance and air flow.

Sensible Total Heat Ratio @ 95°F (35°C) Outside Air DB - EAH Heat Pumps

Model Number	EAH2024H			EAH2030H			EAH2036H			EAH2042H			EAH2048H			EAH2060H		
	A	C	D	A	C	D	A	C	D	A	C	D	A	C	D	A	C	D
Total Capacity	20,600			29,000			33,000			40,000			46,000			56,000		
Sensible Heat Ratio	0.80			0.70			0.70			0.70			0.70			0.70		
Sensible Capacity	16,500			20,300			23,100			27,200			31,000			67,500		
Rated Air Flow (CFM ¹)	950			1,050			1,180			1,350			1,700			1,750		

¹CFM=Cubic Feet per Minute

Sensible Heat Ratios based upon ANSI/AHRI std. 390 outdoor conditions of 95°F (35°C) outdoor and 80°F DB/67°F WB (26.5°C DB/19.5°C WB) return air.

Cooling Performance (BTUH) at Various Outdoor Temperatures - EAH Heat Pumps

Model Number	Outdoor Temperature											
	75°F/24°C	80°F/26.5°C	85°F/29°C	90°F/32°C	95°F/35°C	100°F/38°C	105°F/40.5°C	110°F/43.3°C	115°F/46°C	120°F/49°C	125°F/52°C	130°F/54°C
EAH2024H	23,896	23,072	22,484	21,424	20,600	19,776	18,952	18,128	17,716	16,480	15,656	14,832
EAH2030H	33,640	32,480	31,320	30,160	29,000	27,840	26,680	25,520	24,940	23,200	22,040	20,880
EAH2036H	39,440	38,080	36,720	35,360	34,000	32,640	31,280	29,920	29,240	27,200	25,840	24,480
EAH2042H	46,400	44,800	43,200	41,600	40,000	38,400	36,800	35,200	34,400	32,000	30,400	28,800
EAH2048H	53,360	51,520	49,680	47,840	46,000	44,160	42,320	40,480	39,560	36,800	34,960	33,120
EAH2060H	64,900	62,700	60,500	58,200	56,000	53,700	51,500	49,300	48,100	44,800	42,600	40,300

Based upon ANSI/AHRI std. 390 return air conditions of 80°F DB/67°F WB (26.5°C DB/19.5°C WB). Return air at rated air flow.

Heating Performance (BTUH) at Various Outdoor Temperatures - EAH Heat Pumps

Model Number	Outdoor Temperature									
	10°F/-12.2°C	17°F/-8.3°C	20°F/-6.7°C	30°F/-1.1°C	40°F/4.4°C	47°F/8.3°C	50°F/10°C	60°F/15.6°C	70°F/21.1°C	
EAH2024H	11,560	13,600	14,340	16,930	19,150	21,000	21,630	22,575	23,625	
EAH2030H	15,130	17,800	18,520	21,040	23,200	25,000	25,750	26,875	28,125	
EAH2036H	15,810	18,600	19,740	23,730	27,150	30,000	30,900	32,250	33,750	
EAH2042H	18,700	22,000	23,340	28,030	32,050	35,400	36,462	38,055	39,825	
EAH2048H	20,400	24,000	25,800	32,100	37,500	42,000	43,260	45,150	47,250	
EAH2060H	29,500	34,700	36,300	41,800	46,500	50,500	51,900	54,300	56,800	

Based upon ANSI/AHRI std. 390 return air conditions of 70°F DB (21.1°C DB). Return air at rated air flow.

Electrical Characteristics - Compressor, Fan, Ventilation & Blower Motors EAH Heat Pumps with 2-Stage Compressor

Basic Model	Compressor				Outdoor Fan Motor				Indoor Blower Motor				Ventilation GreenWheel AMPS		
	Type	Volts-Hz-Ph	RLA ¹	LRA ²	Volts-Hz-Ph	RPM ³	FLA ⁴	HP ⁵	Volts-Hz-Ph	RPM ³	FLA ⁴	HP ⁵	OAM ⁶	EXM ⁷	WD ⁸
EAH2024HA	Scroll	208/230-60-1	10.3	62.0	208/230-60-1	1200	3.5	1/3	208/230-60-1	1050	2.8	1/3	1.0	1.0	0.2
EAH2030HA		208/230-60-1	14.6	90.0	208/230-60-1	1200	3.5	1/3	208/230-60-1	1050	4.1	1/2	1.0	1.0	0.2
EAH2036HA		208/230-60-1	14.6	90.0	208/230-60-1	1200	3.5	1/3	208/230-60-1	1050	4.1	1/2	1.0	1.0	0.2
EAH2042HA		208/230-60-1	TBD	TBD	208/230-60-1	1200	5.3	1/2	208/230-60-1	1050	4.1	1/2	1.0	1.0	0.2
EAH2048HA		208/230-60-1	18.3	138.0	208/230-60-1	1200	5.3	1/2	208/230-60-1	1050	4.1	1/2	1.0	1.0	0.2
EAH2060HA		208/230-60-1	25.2	147.3	208/230-60-1	1200	5.3	1/2	208/230-60-1	1050	6.0	3/4	1.0	1.0	0.2
EAH2024HC	Scroll	208/230-60-3	TBD	TBD	208/230-60-1	1200	3.5	1/3	208/230-60-1	1050	2.8	1/3	1.0	1.0	0.2
EAH2030HC		208/230-60-3	TBD	TBD	208/230-60-1	1200	3.5	1/3	208/230-60-1	1050	4.1	1/2	1.0	1.0	0.2
EAH2036HC		208/230-60-3	TBD	TBD	208/230-60-1	1200	3.5	1/3	208/230-60-1	1050	4.1	1/2	1.0	1.0	0.2
EAH2042HC		208/230-60-3	TBD	TBD	208/230-60-1	1200	5.3	1/2	208/230-60-1	1050	4.1	1/2	1.0	1.0	0.2
EAH2048HC		208/230-60-3	TBD	TBD	208/230-60-1	1200	5.3	1/2	208/230-60-1	1050	4.1	1/2	1.0	1.0	0.2
EAH2060HC		208/230-60-3	TBD	TBD	208/230-60-1	1200	5.3	1/2	208/230-60-1	1050	6.0	3/4	1.0	1.0	0.2
EAH2024HD	Scroll	460-60-3	TBD	TBD	208/230-60-1	1200	3.5	1/3	208/230-60-1	1050	2.8	1/3	1.0	1.0	0.2
EAH2030HD		460-60-3	TBD	TBD	208/230-60-1	1200	3.5	1/3	208/230-60-1	1050	4.1	1/2	1.0	1.0	0.2
EAH2036HD		460-60-3	TBD	TBD	208/230-60-1	1200	3.5	1/3	208/230-60-1	1050	4.1	1/2	1.0	1.0	0.2
EAH2042HD		460-60-3	TBD	TBD	208/230-60-1	1200	5.3	1/2	208/230-60-1	1050	4.1	1/2	1.0	1.0	0.2
EAH2048HD		460-60-3	TBD	TBD	208/230-60-1	1200	5.3	1/2	208/230-60-1	1050	4.1	1/2	1.0	1.0	0.2
EAH2060HD		460-60-3	TBD	TBD	208/230-60-1	1200	5.3	1/2	208/230-60-1	1050	6.0	3/4	1.0	1.0	0.2

¹RLA = Rated Load Amps ²LRA = Locked Rotor Amps ³RPM = Revolutions per Minute ⁴FLA = Full Load Amps
⁵HP = Horsepower ⁶OAM = Outside Air Mover ⁷EXM = Exhaust Air Mover ⁸WD = Wheel Drive Motor
 The 460 volt units have a step down transformer for the 230 volt motors.

EAH Heat Pumps Summary Electrical Ratings (Wire and HACR Circuit Breaker Sizing) - Ventilation Configuration:

- C: Economizer, Outside air with Pressure Relief**
- D: Motorized 2-Position Damper, up to 450 cfm of outside air w/Pressure Relief**
- E: Motorized Damper w/Pressure Relief & Independent Motorized Damper Control**
- N: Barometric Damper, up to 15% outside air**
- T: Title 24 Compliant Economizer & Controls**

Electric Heat		000 = None		040 = 4 kw		050 = 5 kw		060 = 6 kw		080 = 8 kw		090 = 9 kw		100 = 10 kw		120 = 12 kw		150 = 15 kw	
Basic Model	Volts-Hz-Ph	SPPE ³		SPPE ³		SPPE ³		SPPE ³		SPPE ³		SPPE ³		SPPE ³		SPPE ³		SPPE ³	
		MCA ¹	MFS ²	MCA ¹	MFS ²	MCA ¹	MFS ²	MCA ¹	MFS ²	MCA ¹	MFS ²	MCA ¹	MFS ²	MCA ¹	MFS ²	MCA ¹	MFS ²	MCA ¹	MFS ²
EAH2024HA	208/230-60-1	19.2	25	40.0	45	45.2	50	50.4	60	60.8	70			71.3	80				
EAH2030HA	208/230-60-1	25.9	40	46.7	50	51.9	60	57.1	60	67.5	70			77.9	80				
EAH2036HA	208/230-60-1	25.9	40	46.7	50	51.9	60	57.1	60	67.5	70			77.9	80				
EAH2042HA	208/230-60-1	TBD	TBD	TBD	TBD	TBD	TBD	TBD	TBD	TBD	TBD			TBD	TBD	TBD	TBD	TBD	TBD
EAH2048HA	208/230-60-1	32.3	50	53.1	60	58.3	70	63.5	70	73.9	80			84.4	90	94.8	100	110.4	125
EAH2060HA	208/230-60-1	42.8	60	63.6	80	68.8	80	74.1	90	84.5	100			94.9	100	105.3	110	120.9	125
EAH2024HC	208/230-60-3	TBD	TBD					TBD	TBD			TBD	TBD			TBD	TBD	TBD	TBD
EAH2030HC	208/230-60-3	TBD	TBD					TBD	TBD			TBD	TBD			TBD	TBD	TBD	TBD
EAH2036HC	208/230-60-3	TBD	TBD					TBD	TBD			TBD	TBD			TBD	TBD	TBD	TBD
EAH2042HC	208/230-60-3	TBD	TBD					TBD	TBD			TBD	TBD			TBD	TBD	TBD	TBD
EAH2048HC	208/230-60-3	TBD	TBD					TBD	TBD			TBD	TBD			TBD	TBD	TBD	TBD
EAH2060HC	208/230-60-3	TBD	TBD					TBD	TBD			TBD	TBD			TBD	TBD	TBD	TBD
EAH2024HD	460-60-3	TBD	TBD					TBD	TBD			TBD	TBD			TBD	TBD	TBD	TBD
EAH2030HD	460-60-3	TBD	TBD					TBD	TBD			TBD	TBD			TBD	TBD	TBD	TBD
EAH2036HD	460-60-3	TBD	TBD					TBD	TBD			TBD	TBD			TBD	TBD	TBD	TBD
EAH2042HD	460-60-3	TBD	TBD					TBD	TBD			TBD	TBD			TBD	TBD	TBD	TBD
EAH2048HD	460-60-3	TBD	TBD					TBD	TBD			TBD	TBD			TBD	TBD	TBD	TBD
EAH2060HD	460-60-3	TBD	TBD					TBD	TBD			TBD	TBD			TBD	TBD	TBD	TBD

S-Circuit - The user can move a pin on the board to control whether the electric heat will operate simultaneously with the compressor (S Circuit – NO) or will not run simultaneously with the compressor (S Circuit – Yes).
¹MCA = Minimum Circuit Ampacity (Wiring Size Amps) ²MFS = Maximum Fuse or HACR Breaker Size ³SPPE = Single Point Power Entry
 MCA & MFS are calculated at 230 volts on the 208-230v. (HPA & HPC) models. The 460 volt HPD models are calculated at 460 volts. This chart should only be used as a guideline for estimating conductor size and overcurrent protection. For the requirements of specific units, always refer to the data label on the unit.

EAH Heat Pumps Summary Electrical Ratings (Wire and HACR Circuit Breaker Sizing) - EAH Heat Pumps with the “S” Circuit Enabled and Ventilation Configuration:

C: Economizer, Outside Air with Pressure Relief
D: Motorized 2-Position Damper, up to 450 cfm of Outside Air w/Pressure Relief
E: Motorized Damper w/Pressure Relief & Independent Motorized Damper Control
N: Barometric Damper, up to 15% Outside Air
T: Title 24 Compliant Economizer & Controls

Electric Heat		000 = None	040 = 4 kw		050 = 5 kw		060 = 6 kw		080 = 8 kw		090 = 9 kw		100 = 10 kw		120 = 12 kw		150 = 15 kw		
Basic Model	Volts-Hz-Ph	SPPE ³		SPPE ³		SPPE ³		SPPE ³		SPPE ³		SPPE ³		SPPE ³		SPPE ³			
		MCA ¹	MFS ²	MCA ¹	MFS ²	MCA ¹	MFS ²	MCA ¹	MFS ²	MCA ¹	MFS ²	MCA ¹	MFS ²	MCA ¹	MFS ²	MCA ¹	MFS ²		
EAH2024HA	208/230-60-1	19.2	25	23.6	25	28.8	30	34.1	35	44.5	45			54.9	60				
EAH2030HA	208/230-60-1	25.9	40	25.9	40	30.1	40	35.4	40	45.8	50			56.2	60				
EAH2036HA	208/230-60-1	25.9	40	25.9	40	30.1	40	35.4	40	45.8	50			56.2	60				
EAH2042HA	208/230-60-1	TBD	TBD	TBD	TBD	TBD	TBD	TBD	TBD	TBD	TBD			TBD	TBD	TBD	TBD	TBD	
EAH2048HA	208/230-60-1	32.3	50	32.3	50	32.3	50	35.4	50	45.8	50			56.2	60	66.6	70	82.2	90
EAH2060HA	208/230-60-1	42.8	60	42.8	60	42.8	60	42.8	60	47.7	60			58.1	60	68.5	70	84.1	90
EAH2024HC	208/230-60-3	TBD	TBD					TBD	TBD			TBD	TBD			TBD	TBD	TBD	TBD
EAH2030HC	208/230-60-3	TBD	TBD					TBD	TBD			TBD	TBD			TBD	TBD	TBD	TBD
EAH2036HC	208/230-60-3	TBD	TBD					TBD	TBD			TBD	TBD			TBD	TBD	TBD	TBD
EAH2042HC	208/230-60-3	TBD	TBD					TBD	TBD			TBD	TBD			TBD	TBD	TBD	TBD
EAH2048HC	208/230-60-3	TBD	TBD					TBD	TBD			TBD	TBD			TBD	TBD	TBD	TBD
EAH2060HC	208/230-60-3	TBD	TBD					TBD	TBD			TBD	TBD			TBD	TBD	TBD	TBD
EAH2024HD	460-60-3	TBD	TBD					TBD	TBD			TBD	TBD			TBD	TBD	TBD	TBD
EAH2030HD	460-60-3	TBD	TBD					TBD	TBD			TBD	TBD			TBD	TBD	TBD	TBD
EAH2036HD	460-60-3	TBD	TBD					TBD	TBD			TBD	TBD			TBD	TBD	TBD	TBD
EAH2042HD	460-60-3	TBD	TBD					TBD	TBD			TBD	TBD			TBD	TBD	TBD	TBD
EAH2048HD	460-60-3	TBD	TBD					TBD	TBD			TBD	TBD			TBD	TBD	TBD	TBD
EAH2060HD	460-60-3	TBD	TBD					TBD	TBD			TBD	TBD			TBD	TBD	TBD	TBD

S-Circuit - The user can move a pin on the board to control whether the electric heat will operate simultaneously with the compressor (S Circuit – NO) or will not run simultaneously with the compressor (S Circuit – Yes).
¹MCA = Minimum Circuit Ampacity (Wiring Size Amps) ²MFS = Maximum Fuse or HACR Breaker Size ³SPPE = Single Point Power Entry
MCA & MFS are calculated at 230 volts on the 208-230v. (HPA & HPC) models. The 460 volt HPD models are calculated at 460 volts. This chart should only be used as a guideline for estimating conductor size and overcurrent protection. For the requirements of specific units, always refer to the data label on the unit.

Unit Load Amps (Heating) - EAH Heat Pumps with Ventilation Configurations:

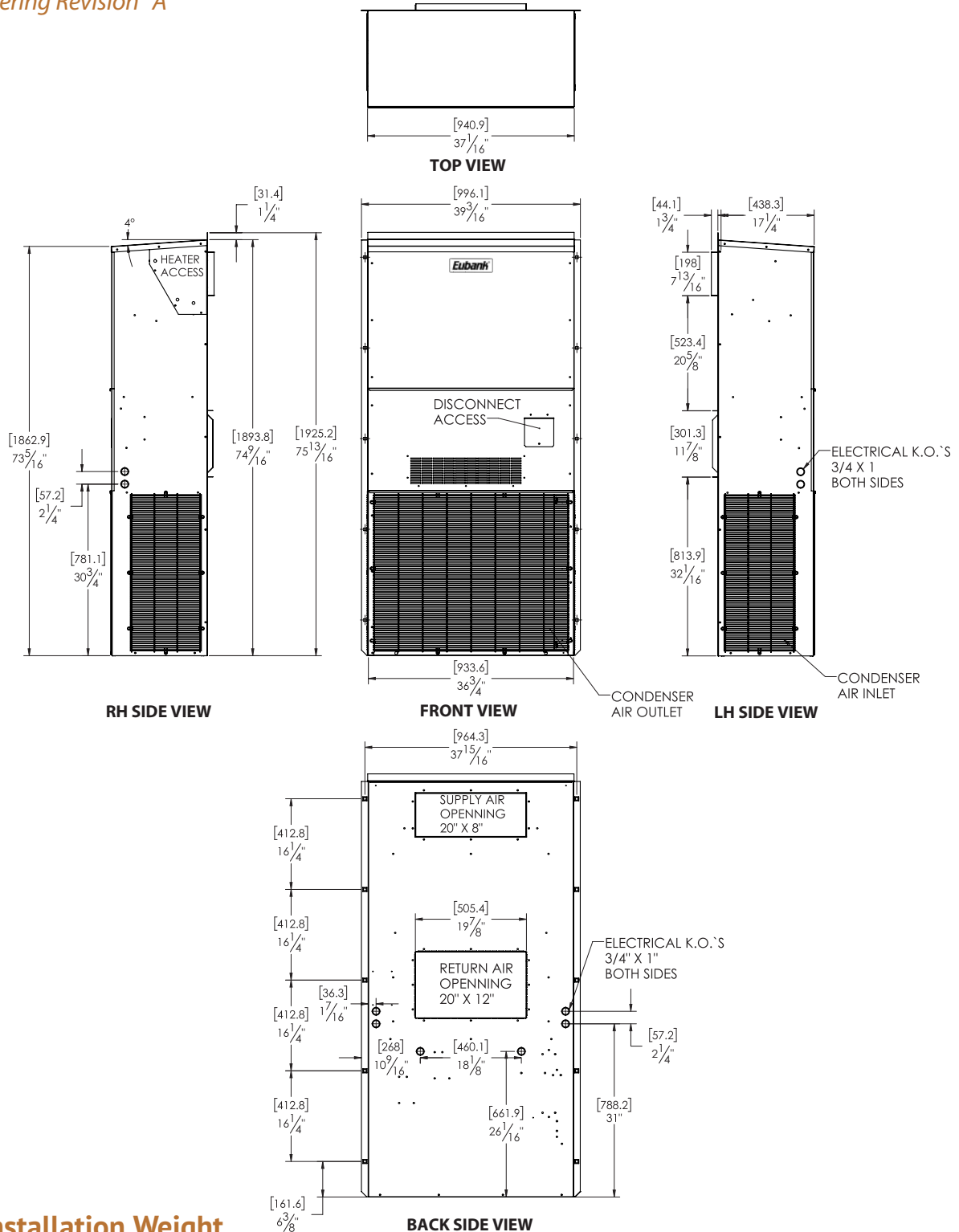
C: Economizer, Outside Air with Pressure Relief
D: Motorized 2-Position Damper, up to 450 cfm of Outside Air w/Pressure Relief
E: Motorized Damper w/Pressure Relief & Independent Motorized Damper Control
N: Barometric Damper, up to 15% Outside Air
T: Title 24 Compliant Economizer & Controls

Basic Model	Volts-Hz-Ph	Current Amps		LOAD OF RESISTIVE HEATING - ELEMENTS ONLY (AMPS)								TOTAL MAXIMUM HEATING AMPS							
				(1) ALL HEATING ELEMENTS ARE ON A SEPARATE CIRCUIT								INCLUDES AMPS FROM MOTOR(S) THAT ARE LOCATED ON AN ELECTRICAL CIRCUIT THAT DOES NOT HAVE HEATERS							
		HP ¹	IBM ²	4 kW	5 kW	6 kW	8 kW	9 kW	10 kW	12 kW	15 kW	4 kW	5 kW	6 kW	8 kW	9 kW	10 kW	12 kW	15 kW
EAH2024HA	208/230-60-1	16.6	2.8	16.7	20.8	25.0	33.3		41.7					19.5	23.6	27.8	36.1	44.5	
EAH2030HA	208/230-60-1	22.2	4.1	16.7	20.8	25.0	33.3		41.7					20.8	24.9	29.1	37.4	45.8	
EAH2036HA	208/230-60-1	22.2	4.1	16.7	20.8	25.0	33.3		41.7					20.8	24.9	29.1	37.4	45.8	
EAH2042HA	208/230-60-1	TBD	TBD	TBD	TBD	TBD	TBD		TBD	TBD	TBD	TBD	TBD	TBD	TBD	TBD	TBD	TBD	TBD
EAH2048HA	208/230-60-1	27.7	4.1	16.7	20.8	25.0	33.3		41.7	50.0	62.5	20.8	24.9	29.1	37.4	45.8	54.1	66.6	
EAH2060HA	208/230-60-1	36.5	6.0	16.7	20.8	25.0	33.3		41.7	50.0	62.5	22.7	26.8	31.0	39.3	47.7	56.0	68.5	
EAH2024HC	208/230-60-3	TBD	TBD			TBD		TBD		TBD	TBD			TBD		TBD		TBD	TBD
EAH2030HC	208/230-60-3	TBD	TBD			TBD		TBD		TBD	TBD			TBD		TBD		TBD	TBD
EAH2036HC	208/230-60-3	TBD	TBD			TBD		TBD		TBD	TBD			TBD		TBD		TBD	TBD
EAH2042HC	208/230-60-3	TBD	TBD			TBD		TBD		TBD	TBD			TBD		TBD		TBD	TBD
EAH2048HC	208/230-60-3	TBD	TBD			TBD		TBD		TBD	TBD			TBD		TBD		TBD	TBD
EAH2060HC	208/230-60-3	TBD	TBD			TBD		TBD		TBD	TBD			TBD		TBD		TBD	TBD
EAH2024HD	460-60-3	TBD	TBD			TBD		TBD		TBD	TBD			TBD		TBD		TBD	TBD
EAH2030HD	460-60-3	TBD	TBD			TBD		TBD		TBD	TBD			TBD		TBD		TBD	TBD
EAH2036HD	460-60-3	TBD	TBD			TBD		TBD		TBD	TBD			TBD		TBD		TBD	TBD
EAH2042HD	460-60-3	TBD	TBD			TBD		TBD		TBD	TBD			TBD		TBD		TBD	TBD
EAH2048HD	460-60-3	TBD	TBD			TBD		TBD		TBD	TBD			TBD		TBD		TBD	TBD
EAH2060HD	460-60-3	TBD	TBD			TBD		TBD		TBD	TBD			TBD		TBD		TBD	TBD

¹HP = Heat Pump Unit Amps (includes Indoor Motor amps) ²IBM = Indoor Blower Motor
Heating kW is rated at 240 volts on the 208-230v. (HPA & HPC) models. Derate heater output by 25% for operation at 208 volts. Heating kW is rated at 480 volts on the HPD models.
Total heating amps for single phase units with two circuits (#1 and #2) includes both circuits. Total heating and cooling amps includes all motors. Three phase models contain single phase motor loads. Values shown are maximum phase loads. Loads are not equally balanced on each phase.

Dimensional Data: EAH1020H/1024H & EAH2024H

Engineering Revision "A"



Installation Weight

EAH1020H/1024H & EAH2024H	Base	w/Economizer	w/3 Phase	w/Economizer & 3 Phase
Pounds	337	357	356	376
Kilograms	153	162	161	171

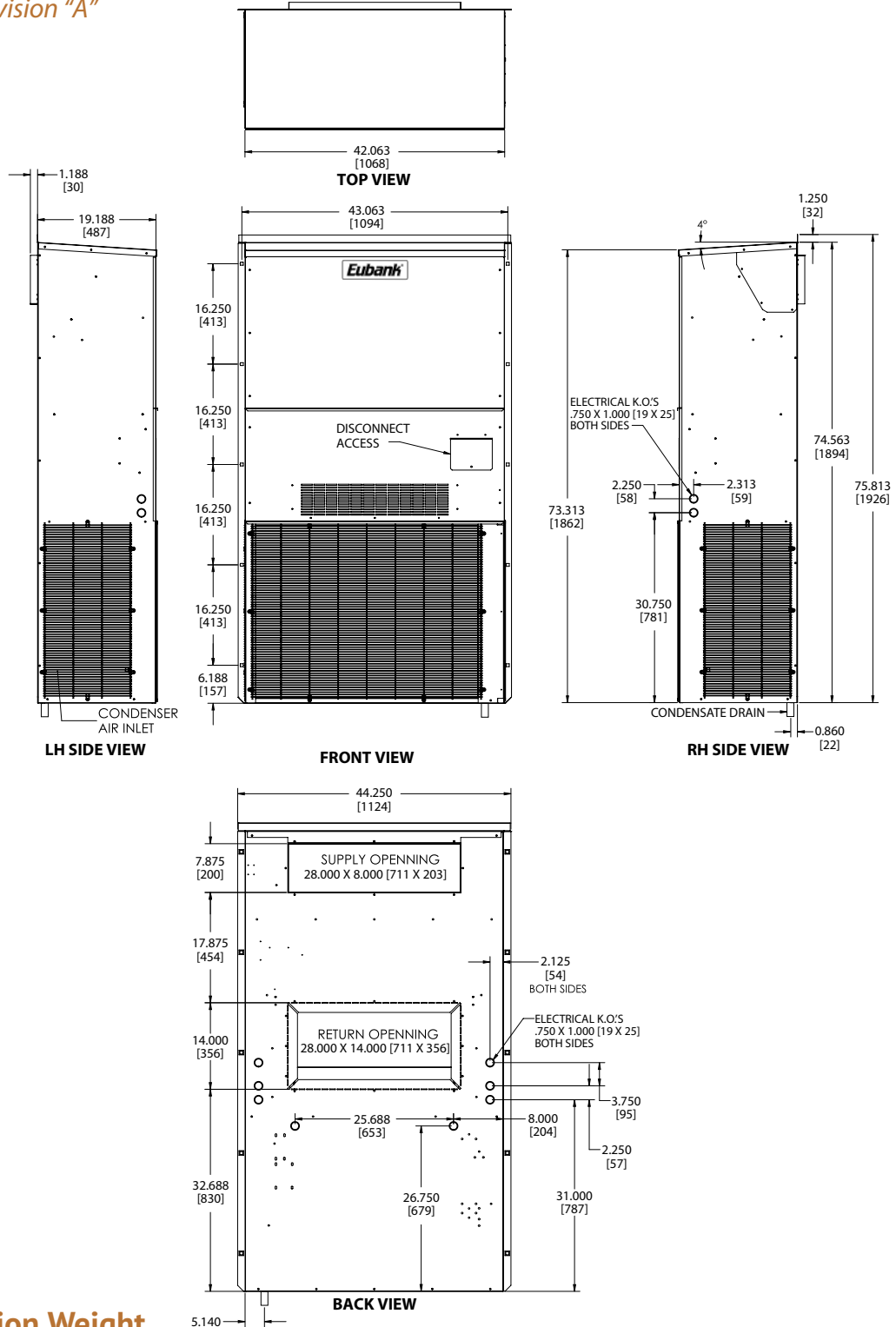
Filter Size

EAH1020H/1024H & EAH2024H	Inches	Millimeters	Part Number	Filters Per Unit	MERV Rating
Return Air Filter	16 x 25 x 2	406 x 635 x 51	80137	1	8 (STD)

Note: All overall outside dimensions are given with +/- .250" (6mm) tolerance.

Dimensional Data: EAH1030H/1036H & EAH2030H/2036H

Engineering Revision "A"



Installation Weight

EAH1030H/1036H & EAH2030H/2036H	Base	w/Economizer	w/3 Phase	w/Economizer & 3 Phase
Pounds	397	419	416	438
Kilograms	180	190	189	199

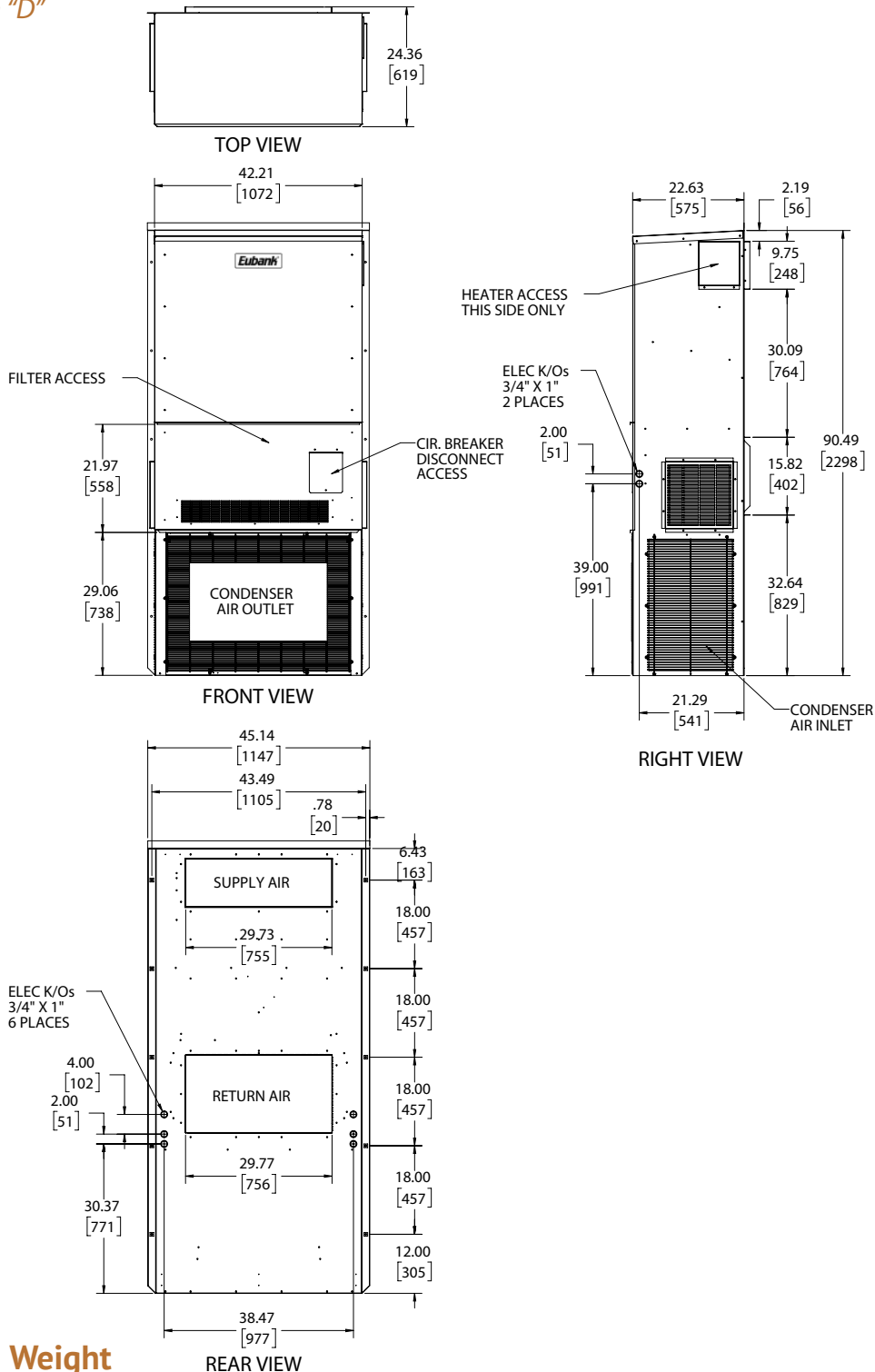
Filter Size

EAH1030H/1036H & EAH2030H/2036H	Inches	Millimeters	Part Number	Filters Per Unit	MERV Rating
Return Air Filter	18 x 30 x 2	457 x 762 x 51	93184	1	8 (STD)

Note: All overall outside dimensions are given with +/- .250" (6mm) tolerance.

Dimensional Data: EAH1042H/1048H & EAH2042H/2048H

Engineering Revision "D"



Installation Weight

EAH1042H, EAH1048H & EAH2042H, EAH2048H	Base	w/Economizer	w/3 Phase	w/Economizer & 3 Phase
Pounds	469	492	522	545
Kilograms	213	223	237	247

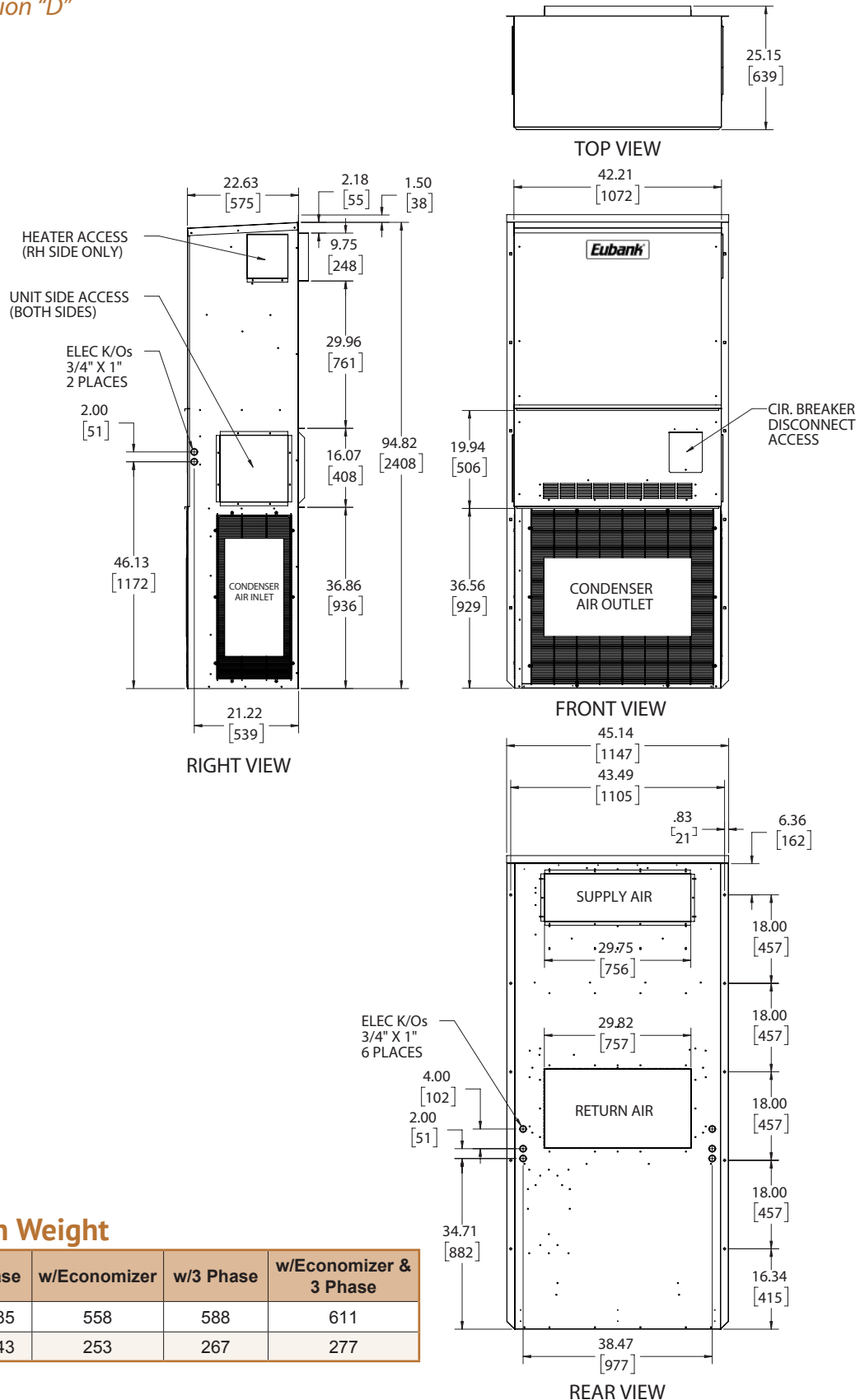
Filter Size

EAH1042H, EAH1048H & EAH2042H, EAH2048H	Inches	Millimeters	Part Number	Filters Per Unit	MERV Rating
Return Air Filter	36½ x 22 x 2	927 x 559 x 51	80162	1	8 (STD)

Note: All overall outside dimensions are given with +/- .250" (6mm) tolerance.

Dimensional Data: EAH1060H & EAH2060H

Engineering Revision "D"



Installation Weight

EAH1060H EAH2060H	Base	w/Economizer	w/3 Phase	w/Economizer & 3 Phase
Pounds	535	558	588	611
Kilograms	243	253	267	277

Filter Size

EAH1060H & EAH2060H	Inches	Millimeters	Part Number	Filters Per Unit	MERV Rating
Return Air Filter	36½ x 22 x 2	927 x 559 x 51	80162	1	8 (STD)

Note: All overall outside dimensions are given with +/- .250" (6mm) tolerance.

Notes

Please consult the Eubank® website at www.EubankWallmount.com for the latest product literature. Detailed dimensional data is available upon request. A complete warranty statement can be found in each product's Installation/Operation Manual, on our website or by contacting Eubank at 229-273-3636. As part of the Eubank continuous improvement program, specifications are subject to change without notice.



P.O. Box 400 • Cordele, GA 31010
156 Seedling Drive • Cordele, GA 31015
Ph: 229-273-3636 • Fax: 229-273-5154

Email: EubankOrders@airxcs.com • Internet: www.EubankWallmount.com

