



An ACS Brand

WALL MOUNT HEAT PUMP PRODUCT DATA SHEET

11 EER 1.5 - 5 Ton Vertical Packaged Wall Mount Heat Pumps

**EAH1020H-1024H-1030H-1036H
1042H-1048H-1060H**

(High Efficiency Single Stage Cooling)

EAH2024H-2030H-2036H-2042H-2048H-2060H

(High Efficiency 2-Stage Cooling)

General Description

The Eubank® EAH family of wall mounted heat pumps are the ideal HVAC system for a wide variety of applications. The exterior mounting means that no valuable interior space is required. Eubank EAH heat pumps are packaged units – the refrigerant piping and internal wiring are factory assembled and thoroughly tested. All components are readily accessible for easy service and maintenance. The energy efficient operation keeps operating costs to a minimum and makes the Eubank heat pumps ideal problem solvers for a wide variety of applications, including offices, classrooms and telecommunication shelters.

► Eubank Heat Pumps Are Available To Meet Any Budget Or Efficiency Requirement:

• EAH Single Stage Models

Eubank heat pumps meet all federal efficiency requirements with an Energy Efficiency Ratio (EER) of 11. Single stage Eubank EAH heat pumps are available in cooling capacities of 1½, 2, 2½, 3, 3½, 4 & 5 tons (20,000 to 60,000 BTUH).

• EAH 2-Stage Models

These models feature a 2-stage compressor which can reduce energy costs by more precisely matching the cooling capacity to the heat load with first stage cooling approximately 65% of the total cooling capacity. This results in Energy Efficiency Ratios (EER's) of up to 11.00 and an Integrated Part Load Value (IPLV) of up to 15.00. EAH 2-Stage models are available in cooling capacities of 2, 2½, 3, 3½, 4 & 5 tons (24,000 to 60,000 BTUH).

► Outside Air for Ventilation or Free Cooling

A full range of accessories and options allows Eubank heat pumps to be optimized for each application. For classrooms, a complete range of ventilation options are available to meet the fresh air requirements of the ASHRAE 62 standard, "Ventilation for Acceptable Indoor Air Quality". Where cooling is required during cool or cold weather, e.g., telecommunications shelters, a factory installed economizer should be used. To insure proper operation and optimum performance, all outside air ventilation packages are non-removable, factory installed and factory calibrated.

► Safety Listed and Energy Certified

All Eubank heat pumps conform to UL/CSA standard 60335-1 and 60335-2-40 and CAN/CSA C22.2, No. 236-11. For energy efficiency and performance, the units are tested and rated in accordance to the ANSI/AHRI (Air-Conditioning Heating and Refrigeration Institute) Standard 390 (Single Package Vertical Units). All units meet or exceed the efficiency requirements of ANSI/ASHRAE/IESNA 90.1-2022. Eubank heat pumps are commercial units and are not intended for use in residential applications.



EAA1036H



FEATURES AND BENEFITS

Meets DOE Efficiency Requirements

- All Models 11EER
- All Models 3.3 COP

Next Generation R-454B Refrigerant

- 78% Lower GWP than R-410A
- Non-Ozone Depleting Refrigerant
- Synthetic Lubricant
- Reduced Compressor Wear

High Efficiency and Reliability

- No Wall Mount Heat Pump is More Efficient
- Optional Economizer Reduces Energy Usage
- High Efficiency Compressor and Lanced Coil Fins
- Liquid Line Temperature Monitoring & Control
- Suction Line Temperature Monitoring & Control

Ease of Installation and Service

- Single Point Power Entry
- Built-In Mounting Flanges and Internal Disconnect
- Standard Access Valves and Filters, Status LEDs

Eubank Heat Pump Features

- **High Efficiency**
 - Scroll compressors are standard on all units.
 - Lanced fins and rifled tubing on the indoor & outdoor coils maximize heat transfer.
 - Electronically commutated indoor blower motor on all models
- **Engineered Reliability with On Board Configuration Menu and Fault Notification.**
 - PC board simplifies wiring, consolidates several of the electrical functions in one device.
 - High refrigerant pressure switch with lockout relay protects the compressor in the event of insufficient condenser air flow.
 - High pressure switch and low pressure sensor with lockout protects refrigerant circuit.
 - Time delay for short cycle protection.
- **Ease of Installation**
 - Sloped top with flashing eliminates need of rain hood.
 - Built-in mounting flanges facilitate installation and minimize chance of water leaks.
 - Factory installed phase monitor is standard on all 3Ø units and will turn the air conditioner off if power supply is not phased properly.
 - Factory installed disconnect on all units, including 460v. models.
 - Outside air hood included with each unit.
 - Single Point Power Entry Complies with latest edition of U.L. Standard 60335-2-40.
- **Rugged Construction**
 - Baked on beige finish over galvaneel steel on exterior sheet metal.
 - Copper tube, aluminum fin evaporator and condenser coils.
 - Corrosion resistant Dacromet® external fasteners.
- **Designed for Operation on Generator Power**
 - All Eubank single & three phase air conditioners are designed to operate on Generator Power. See *Summary Electrical Ratings* for your specific model
- **Ease of Service**
 - Control board on-board display indicates fault conditions.
 - Refrigerant access valves are standard
 - All major components are readily accessible
 - Front control panel allows easy access and complies with NEC clearance codes on side by side units.
 - Major components accessible from either side.

Options for Outside Air for Ventilation

ASHRAE standard 62 requires 15 cfm of outside air per occupant of a classroom. To meet this requirement, Eubank offers seven ventilation packages for every budget and requirement.

➤ **Configuration “C”: Up to 100% Modulating Economizer**

The economizer reduces the cost of air conditioning by using outside air when acceptable to cool the room (Free Cooling). The factory installed Eubank® economizer has integral pressure relief.

Control Board Logic: Upon a “Call for Cooling”, the economizer control board calculates whether the HVAC operates in economizer mode or mechanical cooling mode based on outdoor temperature (dry bulb) or temperature/humidity (enthalpy). When outdoor conditions are favorable for economizer cooling, the damper drives open and modulates to maintain a 55°F mixed air temperature through the supply grille. When outdoor conditions are not favorable for economizer cooling, the economizer damper remains closed, and the HVAC unit will operate in mechanical cooling mode.

Features Designed for Telecommunication applications:

Hydrogen Fault Input: When 24VAC is applied to the Emergency Ventilation (EV) input, the economizer board forces the damper to open 100% for emergency ventilation. The compressor does not operate during Hydrogen Fault/Emergency Ventilation.

Forced Mechanical Cooling: When 24VAC is applied to the FC input of the economizer board, the economizer damper is forced closed, and the HVAC will operate in mechanical cooling mode. This is considered as economizer override in the event economizer cooling is not sufficient for the heat load. Thermostat must provide the fan “G” signal to HVAC to activate the indoor blower.

Economizer Status: The economizer board has contacts that when used with the Marvair CommStat 4 Telecom HVAC Controller, change state to provide feedback to the CommStat 4 to indicate when the HVAC is in economizer mode versus mechanical cooling mode. This feedback allows the CommStat 4 to initiate the forced cooling feature to override economizer cooling and force mechanical cooling.

When used with minimum position potentiometer (optional), the Eubank® economizer can meet requirements of ASHRAE Std. 62.

➤ **Configuration “D”: Two-Position Motorized Fresh Air Damper w/Pressure Relief Ventilation**

Control Board Logic: The 92589 control board allows the position of the “D” damper to be set for desired outside air intake from fully closed to fully open. Setting 15 of the control board configuration menu allows the user to set the position from 20 (2VDC / Closed) to 100 (10VDC 100% open). The damper position can be adjusted in 1VDC increments to any position from closed to 100% open as required.

Operation: Anytime the indoor blower operates, the damper drives open to the position selected in the control board configuration menu setting 15. When the indoor blower stops operation the motorized damper spring returns to the fully closed position.

Note: This circuit does not interrupt the compressor or heater operation.

➤ **Configuration “E”: Two-Position Motorized Fresh Air Damper w/Pressure Relief Ventilation & Independent Control**

Control Board/Factory Installed Relay Logic: The 92589 control board allows the position of the “E” damper to be set for desired outside air intake from fully closed to fully open. Setting 15 of the control board configuration menu allows the user to set the position from 20 (2VDC / Closed) to 100 (10VDC 100% open). The damper position can be adjusted in 1VDC increments to any position from closed to 100% open as required.

Operation: Upon a “Call for Motorized damper” via a 24V signal from an external user-installed device, the motorized damper opens to the position selected in the control board configuration menu setting 15 and the indoor blower operates. A 24VAC signal {sourced from LVTB 24VAC “R” and supplied through a user-provided Normally Open (NO) contact} activates (opens) the Motorized Damper and connected Relief Damper. When the 24VAC signal is removed, the motorized damper spring returns to the fully closed position and the indoor blower stops operation. The motorized damper Does NOT open when there is a call for the indoor fan (G).

Note: This circuit does not interrupt the compressor or heater operation.

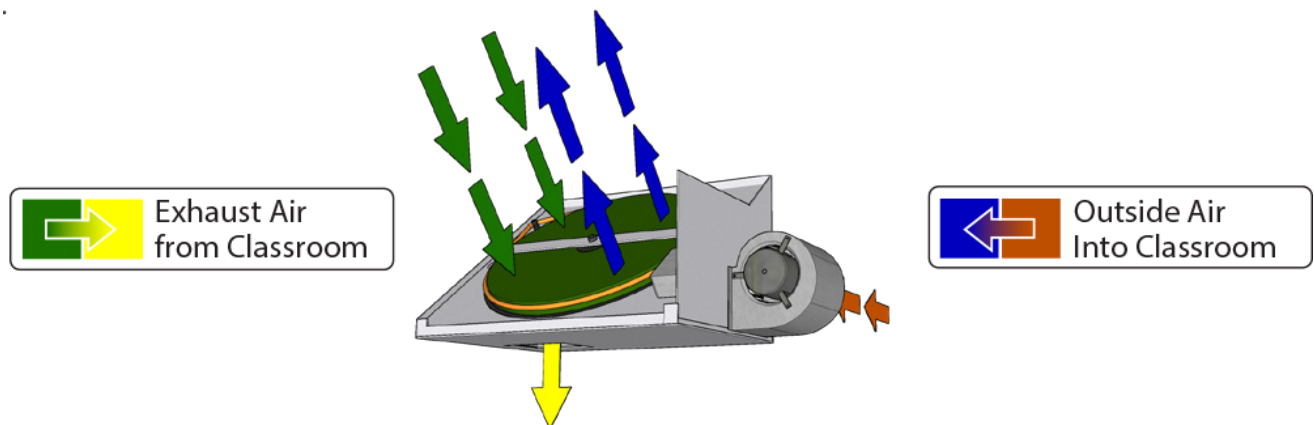
➤ **Configuration “H”: GreenWheel® ERV Energy Recovery Ventilator (Optional only for EAH1030/2030 - EAH1060/2060)**

Allows independent control of the exhaust and intake blowers. When used, the standard speed controller operates the intake blower and the optional second controller, the exhaust blower. Individual blower control allows positive pressurization of the classroom. Field or factory installed.

The Eubank GreenWheel® ERV is a total energy (both sensible and latent) wheel that reduces both construction and operating cost while ventilating the classroom to ASHRAE 62-1999 requirements. The use of the GreenWheel ERV reduces the energy load of the outside air. Exhausting stale, inside air keeps indoor pollutants and harmful gases to a minimum. The Eubank GreenWheel ERV has been tested and certified according to ARI Standard 1060.

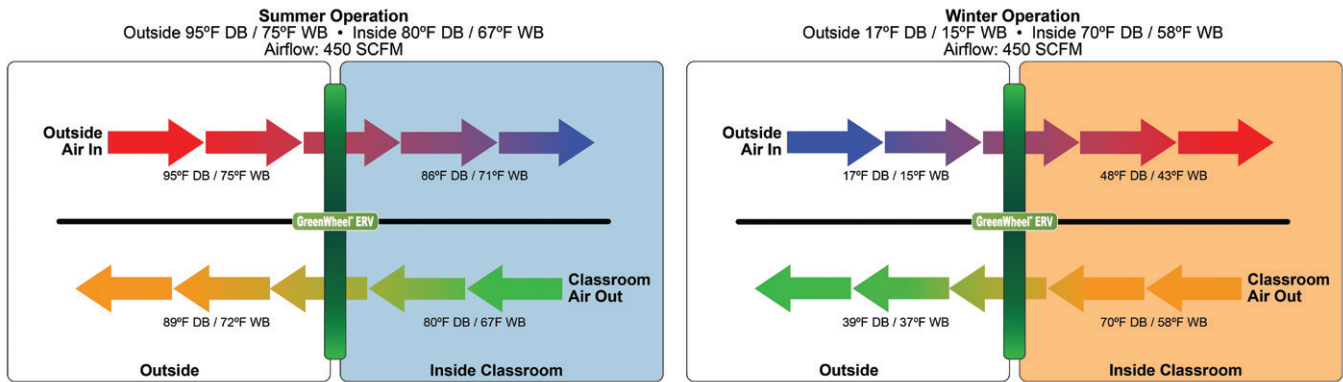
How It Works - During the summer, cool dry air from the classroom is exhausted through the GreenWheel ERV to the outside. As the air passes through the rotating wheel, the desiccant becomes cooler and drier. Simultaneously, hot humid air is being pulled across the rotating wheel. The cool, dry desiccant absorbs moisture and heat from the incoming air. The cooler, drier air is mixed with the return air from the classroom and distributed throughout the room.

In the winter, warm moist air is exhausted through the GreenWheel ERV to the outside. As the air passes through the rotating wheel, the desiccant becomes warmer and absorbs moisture. Simultaneously, cold dry air is being pulled across the rotating wheel. The cold, dry air absorbs heat and moisture from the desiccant. The warmed air is mixed with the return air from the classroom and distributed throughout the room.



Quality Components - The GreenWheel ERV Ventilation package consists of the GreenWheel cassette, an incoming air blower, an exhaust air blower, an air filter for the incoming air and one fan speed controller that controls the speed of both blower motors simultaneously. As an option, a second fan speed controller can be factory installed for independent control of the exhaust air motor and positive pressurization of the classroom. Also, an optional filter on the exhaust air is available on selected models. Please consult your Eubank representative for details. The two

blowers simultaneously pull fresh air from outside and exhaust air from the classroom through the rotating wheel. The air streams are separated by an insulated partition so that the incoming fresh air is not mixed with the exhaust air. Two variable speed blowers ensure that up to 450 CFM of outside air can be brought into the room and the indoor air is properly exhausted. Variable speed blowers permit that the desired quantity of outside air is delivered into the room. Optional independent exhaust air blower control allows positive pressurization of the classroom, i.e., more outside air can be introduced through the GreenWheel ERV than is exhausted.



GreenWheel® Energy Recovery Ventilator Performance

| SCFM* of Outside Air | Energy Conserved, BTUH | | | | | |
|----------------------|--|--------|-------|--|--------|--------|
| | 95° DB/73° WB Outside • 80° DB/67° WB Inside | | | 95° DB/80° WB Outside • 80° DB/67° WB Inside | | |
| | Sensible | Latent | Total | Sensible | Latent | Total |
| 225 | 2,900 | 1,100 | 4,000 | 2,900 | 6,400 | 9,300 |
| 250 | 3,100 | 1,200 | 4,300 | 3,100 | 6,900 | 10,000 |
| 325 | 3,700 | 1,400 | 5,100 | 3,700 | 8,100 | 11,800 |
| 400 | 4,200 | 1,500 | 5,700 | 4,200 | 9,100 | 13,300 |
| 450 | 4,500 | 1,600 | 6,100 | 4,500 | 9,700 | 14,200 |

| SCFM* of Outside Air | Energy Conserved, BTUH | | | | | | | | |
|----------------------|--|--------|-------|--|--------|-------|--|--------|-------|
| | 90° DB/74° WB Outside • 75° DB/64° WB Inside | | | 80° DB/70° WB Outside • 75° DB/64° WB Inside | | | 60° DB/54° WB Outside • 70° DB/58° WB Inside | | |
| | Sensible | Latent | Total | Sensible | Latent | Total | Sensible | Latent | Total |
| 225 | 2800 | 3600 | 6400 | 900 | 2800 | 2700 | 1900 | 200 | 2100 |
| 250 | 3000 | 3800 | 6800 | 1000 | 3000 | 4000 | 2000 | 200 | 2200 |
| 325 | 3600 | 4500 | 8100 | 1200 | 3500 | 4700 | 2400 | 200 | 2600 |
| 400 | 4100 | 4900 | 9000 | 1400 | 3800 | 5200 | 2700 | 300 | 3000 |
| 450 | 4300 | 5200 | 9500 | 1400 | 4000 | 5400 | 2900 | 300 | 3200 |

| SCFM* of Outside Air | Energy Conserved, BTUH | | | | | | | | |
|----------------------|--|--------|-------|--|--------|-------|--|--------|-------|
| | 40° DB/36° WB Outside • 70° DB/58° WB Inside | | | 20° DB/18° WB Outside • 70° DB/58° WB Inside | | | 0° DB/7° WB Outside • 70° DB/58° WB Inside | | |
| | Sensible | Latent | Total | Sensible | Latent | Total | Sensible | Latent | Total |
| 225 | 5600 | 3300 | 8900 | 9300 | 4900 | 14200 | 13000 | 5700 | 18700 |
| 250 | 6000 | 3600 | 9600 | 10000 | 5300 | 15300 | 14000 | 6100 | 14100 |
| 325 | 7200 | 4200 | 11400 | 12000 | 6200 | 18200 | 16700 | 7100 | 23800 |
| 400 | 8100 | 4600 | 12700 | 13500 | 6800 | 20300 | 18900 | 7900 | 26800 |
| 450 | 8600 | 4800 | 13400 | 14400 | 7100 | 21500 | 20100 | 8200 | 28300 |

*SCFM = Standard Cubic Feet per Minute

For performance of the GreenWheel® ERV at conditions other than those shown, please contact your Eubank® representative or the factory.

For performance of the GreenWheel ERV at conditions other than those shown, please contact your Eubank representative or the factory.

- **Configuration “N”: Barometric Fresh Air Damper (Standard)**
Barometric damper capable of up to 15% of rated airflow of outside air; field adjustable, no pressure relief.
- **Configuration “T”: Title 24 Compliant Economizer & Controls**
California Title 24 compliant economizer and associated controls.

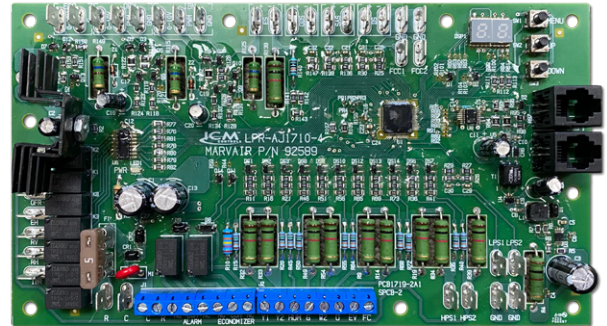
Heat Pump PC Board

► Electronic Control Board

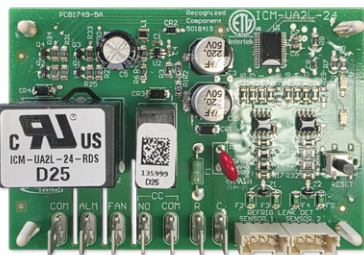
The exclusive Printed Circuit Board (PCB) in base model Eubank heat pumps sets the standard for the industry in terms of flexibility, reliability, and performance. This UL certified component is engineered to optimize Heating, Cooling and Dehumidification operation while communicating valuable information to the end user.

Special Features Include:

- Improved HVAC System Reliability (Built In Sequence / Timer Functionality And Simplified Wiring)
- On Board Configuration Menu With Adjustments Of Various Functions and Setpoints
- 2-Stage Compressor Operation
- Independent Indoor Blower Speed Adjustments For 1st Stage Cooling, 2nd Stage Cooling, Electric Heat And Dehumidification (Optimize Latent and Sensible Capacity)
- Built-In Remote Communication (Monitor and Control Via MODBUS Qty. 2 RJ11 Ports)
- Alarm Status and Fault Display(Drastically Reduces Troubleshooting Time and System Downtime)
- Sensors To Monitor Refrigerant Temperature Of The Low Pressure Circuit and Liquid Line Circuit
- Economizer Control With Adjustments For Both Enthalpy Or Dry Bulb Sensor
- Economizer Status Output Contacts
- Emergency Ventilation Control (Systems Equipped with Ventilation Package)
- Forced Cooling (Overrides Economizer Operation)
- Dehumidification Control (Systems Equipped With Electric Reheat Or Hot Gas Reheat Dehumidification)
- Lockout Contacts (Normally Open Or Normally Closed)
- Alarms Communicated Via MODBUS



► Refrigerant Mitigation Board



All models in this manual are equipped with a R454B refrigerant leak detection system. Once the unit is installed it must be powered, at all times, except for service. During normal operation the leak detection system has no impact on the operation of the unit, however upon detection of R-454B refrigerant all operations are stopped except for the indoor blower. The unit will then re-circulate air in the room for a minimum of 5 minutes. Once the 5 minutes have expired and the concentration of the refrigerant is below 8 percent of the Lower Flammability Limit (LFL) the unit will be allowed to operate as normal. If the concentration of the refrigerant remains above 8 percent of the LFL the unit will remain in re-circulation mode.

To verify actuation of mitigation simply remove the sensor from the mitigation control board and the system should stop all operation except for the indoor blower. There is no need to calibrate or service the sensor. The sensor will provide an alarm upon failure or end of life. The sensor must be replaced with an identical sensor, or a manufacturer approved alternative.

Protection of the Refrigerant Components

► High Refrigerant Pressure Switch

The high pressure switch is located on the liquid line. It is electrically connected to the PC board and will turn the compressor off if the pressure rises above the set point twice on the same call for cooling or heat-pump heating. This protects the compressor if airflow is significantly reduced or lost through the coil performing the condenser function.

► Low Pressure Sensor

The loss of charge low pressure sensor is located on the common suction line. It is electrically connected to the PC board and will turn the compressor off if the pressure drops below the set point twice on the same call for cooling or heat-pump heating. This protects the compressor if airflow is significantly reduced or lost through the coil performing the evaporator function or there is a loss of refrigerant.

Eubank EAH Heat Pump Options

Eubank options can be used to provide optimum performance over a full range of operating conditions.

► Adjustable Outdoor Thermostat

Will not allow electric resistance heat to be energized unless the outdoor temperature is below the desired set point. Field or factory installed. Available on all EAH units.

► Energy Management System (EMS) Relay Kit

Relay to control the unit. Available in 24, 120 or 240 VAC. Field or factory installed.

► Electric Reheat

Control provides simultaneous operation of compressor when in cooling mode and the electric elements to provide dehumidification without over cooling the room. The electric element (kW) must be properly sized for each model for proper operation. Factory installed. Available on all EAH units. Consult factory for details.

► Cabinet Color

Eubank heat pumps are available in six different cabinet colors. The standard colors are Marvail® beige, white, gray and Carlsbad Canyon (brown). The standard cabinet's sides, top and front panels are constructed of 20 gauge painted steel. Contact your Eubank representative for color chips. Custom colors are also available; contact Eubank for details.

Two stainless steel cabinet constructions are available:

Stainless Steel Exterior (Option "5"): This option replaces all standard exterior painted surfaces with stainless steel. This option also replaces the standard unpainted compressor base of the unit and exterior cabinet screws with stainless steel. No other standard construction surfaces are stainless steel in this option, unless listed in this description. Back panel is not stainless steel with this option. This option is designed to give a more economical alternative to full stainless steel, and still offer an enhanced level of protection. For further corrosion protection, please see our "A" offering at full stainless on all metal components.

Stainless Steel Unit (Option "A"): This option replaces all interior and exterior steel sheet metal parts with stainless steel. All galvanized and painted steel surfaces found in the standard unit are stainless steel with this option. All cabinet screws are stainless steel. No other standard construction surfaces are stainless steel, unless listed in this description. This option is designed to give our most robust protection against steel corrosion.

► Extended Warranty

A first-year labor (Silver), and a two-year labor (Gold) are available. See www.EubankWallMount.com for optional warranty details.

► Compressor Sound Jackets

Reduces sound of compressor.

► Anti-Microbial Light

A germicidal UV light destroys toxic bacteria, viruses and mold on the indoor air coil.

► Cold Plasma Air Purification Device

Installed inside the Scholar 2.0 unit, this device neutralizes odors, kills mold, bacteria and viruses. It also helps to control allergens*, asthma*, smoke and airborne particles.

*These statements are based on customer testimonials and have not been evaluated by the FDA.



Cold Plasma Air Purifier

Special Application Packages and Coil Coatings

► Protective Coating Packages

Typically, only non-economizer units are used in corrosive environments, but all Eubank air conditioner are available with corrosion protection. Two corrosion protection packages are offered - one for the condenser section (Coastal Environmental Package) and the other for the entire unit (Coat-All Package).

The Coastal Environmental Package includes:

- Corrosion resistant fasteners
- Sealed or partially sealed condenser fan motor
- Protective coating applied to all exposed internal copper and metal in the condenser section
- Protective coating on the condenser coil (Luvata Insitu®) contains ES2 (embedded stainless steel pigment) technology.

The Coat all Package includes all of the above, plus:

- Protective coating on the evaporator coil (Luvata Insitu®) contains ES2 (embedded stainless steel pigment) technology
- Protective coating on exterior and interior components and sheet metal.

Note 1: The insulated internal sheet metal and the internal control box are not coated.

Note 2: The corrosion prevention coating can not be applied to stainless steel.

➤ **Protective Coil Coatings**

The Condenser Coil or the Evaporator Coil or Both can be coated. Coating the Evaporator Coil in not common. For harsh conditions, e.g., power plants, paper mills or sites where the unit will be exposed to salt water, the coils should be protected by a protective coating.

Note: Cooling capacity may be reduced by up to 5% on units with coated coils.

Accessories

➤ **Thermostats for Single Stage and 2-Stage Heat Pumps**

See the *Marvair Thermostats and Controllers Product Data Sheet* for the thermostats for use with Eubank heat pumps.

➤ **Grilles**

| Description | Size | Eubank P/N |
|---|---------------------------|------------|
| <i>For the EAH1020H/1024H & EAH2024H</i> | | |
| Double Deflection, Aluminum Supply Grille | 20" x 8" (509mm x 203mm) | 80674 |
| Aluminum Return Grille | 20" x 12" (509mm x 305mm) | 80677 |
| Return Filter Grille | 20" x 12" (509mm x 305mm) | 80671 |
| <i>For the EAH1030H/1036H & EAH2030H/2036H</i> | | |
| Double Deflection, Aluminum Supply Grille | 28" x 8" (711mm x 203mm) | 80675 |
| Aluminum Return Grille | 28" x 14" (711mm x 356mm) | 80678 |
| Return Filter Grille* | 28" x 14" (711mm x 356mm) | 80672 |
| <i>For the EAH1042H/1048H/1060H & EAH2042H/2048H/2060H</i> | | |
| Double Deflection, Aluminum Supply Grille | 30" x 10" (762mm x 254mm) | 80676 |
| Aluminum Return Grille | 30" x 16" (762mm x 406mm) | 80679 |
| Return Filter Grille | 30" x 16" (762mm x 406mm) | 80673 |
| Note: Return filter grilles should be used when the 2" (51mm) filter in the EAH unit is not accessible from the exterior of the building. Filter used in the return filter grille is a 1" (25mm) thick filter. The return filter grille is not recommended for use with the EAH heat pumps with economizers. | | |

EER Comparison by Model

| Nominal Cooling Capacity (BTUH) | Basic Model | EER | Nominal Cooling Capacity (BTUH) | Basic Model | EER |
|---------------------------------|-------------|-------|---------------------------------|-------------|-------|
| 20,000 | EAH1020H | 11.00 | 42,000 | EAH1042H | 11.00 |
| | EAH1024H | 11.00 | | EAH2042H | 11.00 |
| 24,000 | EAH2024H | 11.00 | 48,000 | EAH1048H | 11.00 |
| | EAH1030H | 11.00 | | EAH2048H | 11.00 |
| 30,000 | EAH2030H | 11.00 | 60,000 | EAH1060H | 11.00 |
| | EAH1036H | 11.00 | | EAH2060H | 11.00 |
| 36,000 | EAH2036H | 11.00 | | | |

Air Flow (Cubic Feet per Minute)

| Model Number | External Static Pressure (Wet Coil) | | | | | |
|----------------|-------------------------------------|-------|-------|-------|-------|-------|
| | 0 | 0.1 | 0.2 | 0.3 | 0.4 | 0.5 |
| EAH1020H | 875 | 800 | 730 | 650 | 590 | 520 |
| EAH1024H/2024H | 900 | 850 | 775 | 700 | 640 | 560 |
| EAH1030H/2030H | 1,245 | 1,185 | 1,115 | 1,025 | 955 | 845 |
| EAH1036H/2036H | 1,295 | 1,235 | 1,165 | 1,075 | 1,005 | 895 |
| EAH1042H/2042H | 1,550 | 1,400 | 1,270 | 1,175 | 1,090 | 1,000 |
| EAH1048H/2048H | 1,930 | 1,780 | 1,690 | 1,600 | 1,500 | 1,420 |
| EAH1060H/2060H | 1,990 | 1,890 | 1,775 | 1,650 | 1,550 | 1,475 |

Air flow ratings of 208-230v. Units are at 230v. Air flow ratings of 480 v. units are at 460 volts. Operation of units at a different voltage from the rating point will affect air flow.

Room Size Limitations

| | EAH1020H | EAH1024H | EAH1030H | EAH1036H | EAH1042H | EAH1048H | EAH1060H |
|--------------------------------------|----------|----------|----------|----------|----------|----------|----------|
| Minimum Room Size (ft ²) | 108.0 | 108.0 | 109.8 | 117.8 | 137.5 | 157.1 | 180.6 |
| Minimum Supply Height (ft) | 6.9 | 6.9 | 6.9 | 6.9 | 6.9 | 6.9 | 6.9 |
| | EAH2024H | EAH2030H | EAH2036H | EAH2042H | EAH2048H | EAH2060H | |
| Minimum Room Size (ft ²) | | 117.8 | 117.8 | 147.5 | 137.5 | 157.1 | 180.6 |
| Minimum Supply Height (ft) | | 6.9 | 6.9 | 6.9 | 6.9 | 6.9 | 6.9 |

Eubank Heat Pump Model Identification

| Example | E | A | H | 1 | 0 | 3 | 6 | A | D | 0 | 5 | 0 | C | + | + | + | + | 1 | E | A | + | C | 3 | 1 | + | + | + | + | + | + | + |
|----------|---|---|---|---|---|---|---|---|---|----|----|----|----|----|----|----|----|----|----|----|----|----|----|----|----|----|----|----|----|----|---|
| Position | 1 | 2 | 3 | 4 | 5 | 6 | 7 | 8 | 9 | 10 | 11 | 12 | 13 | 14 | 15 | 16 | 17 | 18 | 19 | 20 | 21 | 22 | 23 | 24 | 25 | 26 | 27 | 28 | 29 | 30 | |

| | | | |
|----|---|---|------------------------------|
| 1 | Unit Designation/Family | E = Eubank Wall Mount | |
| 2 | Energy Efficiency Ratio (EER) | A = 11 G = 10 | |
| 3 | Refrigerant Type | H = R-454B | |
| 4 | Compressor Type/Quantity | 1 = Fixed Speed/Single 2 = 2-Stage/Single | |
| 5 | Unit Capacity/Nominal Cooling (BTUH) | 020 = 20,000 | 042 = 42,000 |
| 6 | | 024 = 24,000 | 048 = 48,000 |
| 7 | | 030 = 30,000 | 060 = 60,000 072 = 72,000 |
| 8 | System Type | A = Air Conditioner H = Heat Pump | |
| 9 | Power Supply (Volts-Hz-Phase) | A = 208/230-60-1 C = 208/230-60-3 | D = 460-60-3 Z = 575-60-3 |
| 10 | Electric Heat Designation @ Rated Voltage | 000 = No Heat | 090 = 9KW |
| 11 | | 040 = 4KW | 100 = 10KW |
| 12 | | 050 = 5KW 060 = 6KW 080 = 8KW | 120 = 12KW 150 = 15KW |
| 13 | Ventilation Configuration | A = Solid Front Door C = Economizer D = Motorized Damper w/Pressure Relief E = Motorized Damper w/Pressure Relief & Independent Motorized Damper Control F = No Free Cooling, 100% Emergency Ventilation Only w/Independent Control H = GreenWheel® ERV (030 and Larger Only) N = Barometric Damper w/15% OSA T = Title 24 Compliant Economizer & Controls + = None \$ = Special | |
| 14 | Dehumidification | G = Hot Gas Reheat R = Electric Reheat + = None \$ = Special | |
| 15 | Controls | A = Power Fail Alarm w/Additional Lockouts C = 24V EMS Relay Kit H = Factory Installed PLC + = Printed Circuit Board (STD) \$ = Special | |
| 16 | Operating Condition | D = Low Ambient w/EFS & Desert Duty (A/C Only) F = Low Ambient w/EFS, Desert Duty & Hard Start (1Ø Only) G = Low Ambient w/EFS, Desert Duty & CCH V = Low Ambient w/EFS, Hard Start & CCH (1Ø Only) Z = Low Ambient w/CCH & EFS (STD H/P) 2 = Low Ambient w/FCC & EFS (STD A/C) + = None \$ = Special | |

Note: Not all options are available with all configurations. Contact your Eubank sales representative for configuration details and feature compatibility.

| | | | |
|----|-----------------------------|--|--|
| 17 | Indoor Air Quality Features | A = UV Light D = Dry Bulb Sensor E = Dry Bulb Sensor w/Dirty Filter G = Dirty Filter Sensor K = Bi-Polar Ionization V = Dry Bulb, Dirty Filter & Dust Sensor + = None \$ = Special | |
| 18 | Air Flow | 1 = Top Supply/Center Return (STD) 2 = Center Supply/Top Return 3 = Bottom Supply/Middle Return 6 = 3T3 w/Top Supply/Center Return 7 = 3T5 w/Top Supply/Center Return 9 = 4T3 D = 3T3 Center Supply/Top Return E = 3T5 Center Supply/Top Return \$ = Special | |
| 19 | Compressor Location | C = Center - All 6 ton units & 5 ton Center Supply/Top Return D = Left Hand - All 3 1/2 to 5 ton units E = Right Hand - All 1 1/2 to 3 ton units | |
| 20 | Filter Option | A = 2" Pleated (MERV 8, AC/HP-C) D = MERV 11 High Filtration Package E = MERV 13 High Filtration Package F = Filter Access Through Return Air Grille W = Aluminum Washable + = None \$ = Special | |
| 21 | Corrosion Protection | A = Condenser Coil Only C = Evaporator Coil Only D = Both Coils Condenser & Evaporator E = All Coils Cond/Evap/Reheat F = Coat All G = Coastal Package & Evaporator Coil K = Coastal Package + = None \$ = Special | |
| 22 | Engineering Revision Level | A3 C3 D3 | |
| 23 | | | |
| 24 | Cabinet Color | 1 = Marvair Beige (STD) 2 = Gray (STD) 3 = Carlsbad Canyon (STD) 4 = White (STD) 5 = Stainless Steel Exterior A = Stainless Steel - Unit \$ = Custom Color | |
| 25 | Sound Attenuation | 2 = Compressor Blanket + = None | |
| 26 | Security Option | A = Lockable Access Plate/Tamper Proof + = None \$ = Special | |
| 27 | Fastener/Drain Pan Option | A = Stainless Steel Fasteners C = Stainless Steel Drain Pan D = Stainless Steel Fasteners & Drain Pan + = None \$ = Special | |
| 28 | Unused | + = None \$ = Special | |
| 29 | Unused | + = None \$ = Special | |
| 30 | Special Variation | + = None \$ = Special Configuration Not Covered by Model Nomenclature | |

Eubank EAH Single Stage Heat Pump Certified Ratings & Performance

Efficiency and Capacity Ratings at ANSI/AHRI Standard 390 - EAH Heat Pumps

| Model Number | EAH1020H | EAH1024H | | | EAH1030H | | | EAH1036H | | | EAH1042H | | | EAH1048H | | | EAH1060H | | |
|---|----------|----------|---|---|----------|---|---|----------|---|---|----------|---|---|----------|---|---|----------|---|---|
| | A | A | C | D | A | C | D | A | C | D | A | C | D | A | C | D | A | C | D |
| Cooling BTUH¹ | 20,000 | 24,000 | | | 29,000 | | | 35,000 | | | 42,000 | | | 46,000 | | | 57,000 | | |
| EER² | 11.00 | 11.00 | | | 11.00 | | | 11.00 | | | 11.00 | | | 11.00 | | | 11.00 | | |
| High Temperature Heating³ | 20,000 | 24,000 | | | 27,000 | | | 30,000 | | | 34,000 | | | 42,000 | | | 51,000 | | |
| High Temperature COP⁴ | 3.3 | 3.3 | | | 3.3 | | | 3.3 | | | 3.3 | | | 3.3 | | | 3.3 | | |
| Rated Air Flow (CFM⁵) | 800 | 820 | | | 1,150 | | | 1,200 | | | 1,350 | | | 1,700 | | | 1,750 | | |

¹Cooling is rated at 95°F (35°C) outdoor and 80°F DB/67°F WB (26.5°C DB/19.5°C WB) return air.

²EER = Energy Efficiency Ratio

³High Temperature Heating & COP are rated at 47°F DB/43°F WB (8.3°C DB/6.1°C WB) outdoor and 70°F (21.1°C) return air.

⁴COP = Coefficient of Performance

⁵CFM = Cubic Feet per Minute

Ratings are with no outside air. Performance will be affected by altitude. Ratings are at 230 volts for 208/230 volt units ("A" & "C" models) and 460 volts for "D" models. Operation of units at a different voltage from that of the rating point will affect performance and air flow.

Sensible Total Heat Ratio @ 95°F (35°C) Outside Air DB - EAH Heat Pumps

| Model Number | EAH1020H | EAH1024H | | | EAH1030H | | | EAH1036H | | | EAH1042H | | | EAH1048H | | | EAH1060H | | |
|---|----------|----------|---|---|----------|---|---|----------|---|---|----------|---|---|----------|---|---|----------|---|---|
| | A | A | C | D | A | C | D | A | C | D | A | C | D | A | C | D | A | C | D |
| Total Capacity | 20,000 | 24,000 | | | 29,000 | | | 35,000 | | | 42,000 | | | 46,000 | | | 57,000 | | |
| Sensible Heat Ratio | 0.80 | 0.80 | | | 0.70 | | | 0.70 | | | 0.70 | | | 0.70 | | | 0.60 | | |
| Sensible Capacity | 15,000 | 18,600 | | | 21,500 | | | 24,500 | | | 27,400 | | | 31,000 | | | 36,900 | | |
| Rated Air Flow (CFM¹) | 800 | 820 | | | 1,150 | | | 1,200 | | | 1,350 | | | 1,700 | | | 1,750 | | |

¹CFM=Cubic Feet per Minute

Sensible Heat Ratios based upon ANSI/AHRI std. 390 outdoor conditions of 95°F (35°C) outdoor and 80°F DB/67°F WB (26.5°C DB/19.5°C WB) return air.

Cooling Performance (BTUH) at Various Outdoor Temperatures - EAH Heat Pumps

| Model Number | Outdoor Temperature | | | | | | | | | | | |
|-----------------|---------------------|-------------|-----------|-----------|-----------|------------|--------------|--------------|------------|------------|------------|------------|
| | 75°F/24°C | 80°F/26.5°C | 85°F/29°C | 90°F/32°C | 95°F/35°C | 100°F/38°C | 105°F/40.5°C | 110°F/43.3°C | 115°F/46°C | 120°F/49°C | 125°F/52°C | 130°F/54°C |
| EAH1020H | 23,200 | 22,400 | 21,600 | 20,800 | 20,000 | 19,200 | 18,400 | 17,600 | 17,200 | 16,840 | 16,480 | 16,120 |
| EAH1024H | 27,840 | 26,880 | 25,920 | 24,960 | 24,000 | 23,040 | 22,080 | 21,120 | 20,640 | 20,208 | 19,776 | 19,344 |
| EAH1030H | 33,640 | 32,480 | 31,320 | 30,160 | 29,000 | 27,840 | 26,680 | 25,520 | 24,940 | 24,418 | 23,896 | 23,374 |
| EAH1036H | 40,600 | 39,200 | 37,800 | 36,400 | 35,000 | 33,600 | 32,200 | 30,800 | 30,100 | 29,470 | 28,840 | 28,210 |
| EAH1042H | 48,720 | 47,040 | 45,360 | 43,680 | 42,000 | 40,320 | 38,640 | 36,960 | 36,120 | 35,364 | 34,608 | 33,852 |
| EAH1048H | 53,360 | 51,520 | 49,680 | 47,840 | 46,000 | 44,160 | 42,320 | 40,480 | 39,560 | 38,732 | 37,904 | 37,076 |
| EAH1060H | 66,120 | 63,840 | 61,560 | 59,280 | 57,000 | 54,720 | 52,440 | 50,160 | 49,020 | 47,994 | 46,968 | 45,942 |

Based upon ANSI/AHRI std. 390 return air conditions of 80°F DB/67°F WB (26.5°C DB/19.5°C WB). Return air at rated air flow.

Heating Performance (BTUH) at Various Outdoor Temperatures - EAH Heat Pumps

| Model Number | Outdoor Temperature | | | | | | | | | |
|-----------------|---------------------|-------------|-------------|-------------|------------|------------|-----------|-------------|-------------|--|
| | 10°F/-12.2°C | 17°F/-8.3°C | 20°F/-6.7°C | 30°F/-1.1°C | 40°F/4.4°C | 47°F/8.3°C | 50°F/10°C | 60°F/15.6°C | 70°F/21.1°C | |
| EAH1020H | 10,766 | 11,333 | 12,200 | 15,233 | 17,833 | 20,000 | 20,600 | 21,500 | 22,500 | |
| EAH1024H | 11,560 | 13,600 | 14,640 | 18,280 | 21,400 | 24,000 | 24,720 | 25,800 | 27,000 | |
| EAH1030H | 15,130 | 17,800 | 18,720 | 21,940 | 24,700 | 27,000 | 27,810 | 29,025 | 30,375 | |
| EAH1036H | 15,810 | 18,600 | 19,740 | 23,730 | 27,150 | 30,000 | 30,900 | 32,250 | 33,750 | |
| EAH1042H | 18,700 | 22,000 | 23,340 | 28,030 | 32,050 | 35,400 | 36,462 | 38,055 | 39,825 | |
| EAH1048H | 20,400 | 24,000 | 25,800 | 32,100 | 37,500 | 42,000 | 43,260 | 45,150 | 47,250 | |
| EAH1060H | 22,900 | 27,000 | 29,300 | 37,500 | 44,600 | 51,000 | 51,900 | 54,300 | 61,100 | |

Based upon ANSI/AHRI std. 390 return air conditions of 70°F DB (21.1°C DB). Return air at rated air flow.

Electrical Characteristics - Compressor, Fan, Ventilation & Blower Motors

EAH Heat Pumps with Single Stage Compressor

| Basic Model | Compressor | | | | Outdoor Fan Motor | | | | Indoor Blower Motor | | | | Ventilation GreenWheel AMPS | | |
|-------------|------------|--------------|------------------|------------------|-------------------|------------------|------------------|-----------------|---------------------|------------------|------------------|-----------------|-----------------------------|------------------|-----------------|
| | Type | Volts-Hz-Ph | RLA ¹ | LRA ² | Volts-Hz-PH | RPM ³ | FLA ⁴ | HP ⁵ | Volts-Hz-PH | RPM ³ | FLA ⁴ | HP ⁵ | OAM ⁶ | EXM ⁷ | WD ⁸ |
| EAH1020HA | Scroll | 208/230-60-1 | 10.3 | 60.2 | 208/230-60-1 | 1200 | 3.5 | 1/3 | 208/230-60-1 | 1200 | 2.8 | 1/3 | | | |
| EAH1024HA | | 208/230-60-1 | 11.9 | 67.8 | 208/230-60-1 | 1200 | 3.5 | 1/3 | 208/230-60-1 | 1200 | 2.8 | 1/3 | 1.0 | 1.0 | 0.2 |
| EAH1030HA | | 208/230-60-1 | 13.5 | 82.5 | 208/230-60-1 | 1200 | 3.5 | 1/3 | 208/230-60-1 | 1200 | 4.1 | 1/2 | 1.0 | 1.0 | 0.2 |
| EAH1036HA | | 208/230-60-1 | 14.7 | 109.0 | 208/230-60-1 | 1200 | 3.5 | 1/3 | 208/230-60-1 | 1050 | 4.1 | 1/2 | 1.0 | 1.0 | 0.2 |
| EAH1042HA | | 208/230-60-1 | 18.6 | 123.0 | 208/230-60-1 | 1200 | 5.3 | 1/2 | 208/230-60-1 | 1050 | 4.1 | 1/2 | 1.0 | 1.0 | 0.2 |
| EAH1048HA | | 208/230-60-1 | 22.4 | 126.0 | 208/230-60-1 | 1200 | 5.3 | 1/2 | 208/230-60-1 | 1050 | 4.1 | 1/2 | 1.0 | 1.0 | 0.2 |
| EAH1060HA | | 208/230-60-1 | 25.6 | 155.0 | 208/230-60-1 | 1200 | 6.3 | 3/4 | 208/230-60-1 | 1050 | 6.0 | 3/4 | 1.0 | 1.0 | 0.2 |
| EAH1024HC | Scroll | 208/230-60-3 | 8.3 | 67.7 | 208/230-60-1 | 1200 | 3.5 | 1/3 | 208/230-60-1 | 1200 | 2.8 | 1/3 | | | |
| EAH1030HC | | 208/230-60-3 | 12.8 | 97.5 | 208/230-60-1 | 1200 | 3.5 | 1/3 | 208/230-60-1 | 1200 | 4.1 | 1/2 | 1.0 | 1.0 | 0.2 |
| EAH1036HC | | 208/230-60-3 | 12.2 | 102.8 | 208/230-60-1 | 1200 | 3.5 | 1/3 | 208/230-60-1 | 1200 | 4.1 | 1/2 | 1.0 | 1.0 | 0.2 |
| EAH1042HC | | 208/230-60-3 | 12.8 | 102.8 | 208/230-60-1 | 1200 | 5.3 | 1/2 | 208/230-60-1 | 1050 | 4.1 | 1/2 | 1.0 | 1.0 | 0.2 |
| EAH1048HC | | 208/230-60-3 | 12.8 | 120.4 | 208/230-60-1 | 1200 | 5.3 | 1/2 | 208/230-60-1 | 1050 | 4.1 | 1/2 | 1.0 | 1.0 | 0.2 |
| EAH1060HC | | 208/230-60-3 | 18.6 | 155.0 | 208/230-60-1 | 1200 | 6.3 | 3/4 | 208/230-60-1 | 1050 | 6.0 | 3/4 | 1.0 | 1.0 | 0.2 |
| EAH1024HD | Scroll | 460-60-3 | 5.1 | 38.1 | 208/230-60-1 | 1200 | 3.5 | 1/3 | 208/230-60-1 | 1200 | 2.8 | 1/3 | | | |
| EAH1030HD | | 460-60-3 | 5.1 | 44.3 | 208/230-60-1 | 1200 | 3.5 | 1/3 | 208/230-60-1 | 1200 | 4.1 | 1/2 | 1.0 | 1.0 | 0.2 |
| EAH1036HD | | 460-60-3 | 5.8 | 50.0 | 208/230-60-1 | 1200 | 3.5 | 1/3 | 208/230-60-1 | 1200 | 4.1 | 1/2 | 1.0 | 1.0 | 0.2 |
| EAH1042HD | | 460-60-3 | 5.8 | 50.0 | 208/230-60-1 | 1200 | 5.3 | 1/2 | 208/230-60-1 | 1050 | 4.1 | 1/2 | 1.0 | 1.0 | 0.2 |
| EAH1048HD | | 460-60-3 | 6.0 | 49.4 | 208/230-60-1 | 1200 | 5.3 | 1/2 | 208/230-60-1 | 1050 | 4.1 | 1/2 | 1.0 | 1.0 | 0.2 |
| EAH1060HD | | 460-60-3 | 8.3 | 58.1 | 208/230-60-1 | 1200 | 6.3 | 3/4 | 208/230-60-1 | 1050 | 6.0 | 3/4 | 1.0 | 1.0 | 0.2 |
| EAH1024HZ | Scroll | 575-60-3 | 3.8 | 27.7 | 208/230-60-1 | 1200 | 3.5 | 1/3 | 208/230-60-1 | 1200 | 2.8 | 1/3 | | | |
| EAH1030HZ | | 575-60-3 | 4.5 | 27.1 | 208/230-60-1 | 1200 | 3.5 | 1/3 | 208/230-60-1 | 1200 | 4.1 | 1/2 | 1.0 | 1.0 | 0.2 |
| EAH1036HZ | | 575-60-3 | 4.5 | 41.0 | 208/230-60-1 | 1200 | 3.5 | 1/3 | 208/230-60-1 | 1200 | 4.1 | 1/2 | 1.0 | 1.0 | 0.2 |
| EAH1042HZ | | 575-60-3 | 5.1 | 41.0 | 208/230-60-1 | 1200 | 5.3 | 1/2 | 208/230-60-1 | 1050 | 4.1 | 1/2 | 1.0 | 1.0 | 0.2 |
| EAH1048HZ | | 575-60-3 | 5.8 | 41.0 | 208/230-60-1 | 1200 | 5.3 | 1/2 | 208/230-60-1 | 1050 | 4.1 | 1/2 | 1.0 | 1.0 | 0.2 |
| EAH1060HZ | | 575-60-3 | 7.7 | 47.8 | 208/230-60-1 | 1200 | 6.3 | 3/4 | 208/230-60-1 | 1050 | 6.0 | 3/4 | 1.0 | 1.0 | 0.2 |

¹RLA = Rated Load Amps ²LRA = Locked Rotor Amps ³RPM = Revolutions per Minute ⁴FLA = Full Load Amps
⁵HP = Horsepower ⁶OAM = Outside Air Mover ⁷EXM = Exhaust Air Mover ⁸WD = Wheel Drive Motor
 The 460 volt units have a step down transformer for the 230 volt motors.

EAH Heat Pumps Summary Electrical Ratings (Wire and HACR Circuit Breaker Sizing) - Ventilation Configuration:

C: Economizer, Outside Air with Pressure Relief

D: Motorized 2-Position Damper, up to 450 cfm of Outside Air w/Pressure Relief

E: Motorized Damper w/Pressure Relief & Independent Motorized Damper Control

N: Barometric Damper, up to 15% Outside Air

T: Title 24 Compliant Economizer & Controls

| Electric Heat | | 000 = None | | 040 = 4 kw | | 050 = 5 kw | | 060 = 6 kw | | 080 = 8 kw | | 090 = 9 kw | | 100 = 10 kw | | 120 = 12 kw | | 150 = 15 kw | | |
|---------------|--------------|-------------------|------------------|-------------------|------------------|-------------------|------------------|-------------------|------------------|-------------------|------------------|-------------------|------------------|-------------------|------------------|-------------------|------------------|-------------------|------------------|----|
| Basic Model | Volts-Hz-Ph | SPPE ³ | | SPPE ³ | | SPPE ³ | | SPPE ³ | | SPPE ³ | | SPPE ³ | | SPPE ³ | | SPPE ³ | | SPPE ³ | | |
| | | MCA ¹ | MFS ² | MCA ¹ | MFS ² | MCA ¹ | MFS ² | MCA ¹ | MFS ² | MCA ¹ | MFS ² | MCA ¹ | MFS ² | MCA ¹ | MFS ² | MCA ¹ | MFS ² | MCA ¹ | MFS ² | |
| EAH1020HA | 208/230-60-1 | 19.2 | 25 | 40.0 | 45 | 45.2 | 50 | 50.4 | 60 | 60.8 | 70 | | | 71.3 | 80 | | | | | |
| EAH1024HA | 208/230-60-1 | 21.2 | 30 | 42.0 | 45 | 47.2 | 50 | 52.4 | 60 | 62.8 | 70 | | | 73.3 | 80 | | | | | |
| EAH1030HA | 208/230-60-1 | 24.5 | 35 | 45.3 | 50 | 50.5 | 60 | 55.7 | 60 | 66.1 | 70 | | | 76.6 | 80 | 87.0 | 90 | 102.6 | 110 | |
| EAH1036HA | 208/230-60-1 | 26.0 | 40 | 46.8 | 50 | 52.0 | 60 | 57.2 | 60 | 67.6 | 70 | | | 78.1 | 80 | 88.5 | 90 | 104.1 | 110 | |
| EAH1042HA | 208/230-60-1 | 32.7 | 50 | 53.5 | 60 | 58.7 | 70 | | | | | | | 84.7 | 90 | 95.2 | 100 | 110.8 | 125 | |
| EAH1048HA | 208/230-60-1 | 37.4 | 50 | 58.2 | 70 | 63.4 | 80 | | | | | | | 89.5 | 100 | 99.9 | 100 | 115.5 | 125 | |
| EAH1060HA | 208/230-60-1 | 44.3 | 60 | 65.1 | 80 | 70.3 | 90 | | | | | | | 96.4 | 110 | 106.8 | 110 | 122.4 | 125 | |
| EAH1024HC | 208/230-60-3 | 16.7 | 20 | | | | | 34.7 | 35 | | | | 43.7 | 45 | | | 52.8 | 60 | 61.8 | 70 |
| EAH1030HC | 208/230-60-3 | 23.6 | 35 | | | | | 41.6 | 50 | | | | 50.7 | 60 | | | 59.7 | 60 | 68.7 | 70 |
| EAH1036HC | 208/230-60-3 | 22.9 | 35 | | | | | 40.9 | 45 | | | | 49.9 | 50 | | | 58.9 | 60 | 68.0 | 70 |
| EAH1042HC | 208/230-60-3 | 25.4 | 35 | | | | | 43.4 | 50 | | | | 52.5 | 60 | | | 61.5 | 70 | 70.5 | 80 |
| EAH1048HC | 208/230-60-3 | 25.4 | 35 | | | | | 43.4 | 50 | | | | 52.5 | 60 | | | 61.5 | 70 | 70.5 | 80 |
| EAH1060HC | 208/230-60-3 | 35.6 | 50 | | | | | 53.6 | 60 | | | | 62.6 | 70 | | | 71.6 | 80 | 80.7 | 90 |
| EAH1024HD | 460-60-3 | 9.5 | 15 | | | | | 18.5 | 20 | | | | 23.1 | 25 | | | 27.6 | 30 | 32.1 | 35 |
| EAH1030HD | 460-60-3 | 10.2 | 15 | | | | | 19.2 | 20 | | | | 23.7 | 25 | | | 28.2 | 30 | 32.7 | 35 |
| EAH1036HD | 460-60-3 | 11.1 | 15 | | | | | 20.1 | 25 | | | | 24.6 | 25 | | | 29.1 | 30 | 33.6 | 35 |
| EAH1042HD | 460-60-3 | 12.0 | 15 | | | | | 21.0 | 25 | | | | 25.5 | 30 | | | 30.0 | 30 | 34.5 | 35 |
| EAH1048HD | 460-60-3 | 12.2 | 15 | | | | | 21.2 | 25 | | | | 25.7 | 30 | | | 30.2 | 35 | 34.8 | 35 |
| EAH1060HD | 460-60-3 | 16.5 | 20 | | | | | 25.5 | 30 | | | | 30.1 | 35 | | | 34.6 | 35 | 39.1 | 40 |
| EAH1024HZ | 575-60-3 | 7.3 | 15 | | | | | 14.8 | 15 | | | | 18.6 | 20 | | | 22.3 | 25 | 26.1 | 30 |
| EAH1030HZ | 575-60-3 | 8.7 | 15 | | | | | 16.2 | 20 | | | | 20.0 | 20 | | | 23.7 | 25 | 27.5 | 30 |
| EAH1036HZ | 575-60-3 | 8.7 | 15 | | | | | 16.2 | 20 | | | | 20.0 | 20 | | | 23.7 | 25 | 27.5 | 30 |
| EAH1042HZ | 575-60-3 | 10.1 | 15 | | | | | 17.7 | 20 | | | | 21.4 | 25 | | | 25.2 | 30 | 29.0 | 30 |
| EAH1048HZ | 575-60-3 | 11.0 | 15 | | | | | 18.5 | 20 | | | | 22.3 | 25 | | | 26.1 | 30 | 29.8 | 30 |
| EAH1060HZ | 575-60-3 | 14.5 | 20 | | | | | 22.1 | 25 | | | | 25.8 | 30 | | | 29.6 | 30 | 33.4 | 35 |

S-Circuit - The user can move a pin on the board to control whether the electric heat will operate simultaneously with the compressor (S Circuit – NO) or will not run simultaneously with the compressor (S Circuit – Yes).

¹MCA = Minimum Circuit Ampacity (Wiring Size Amps) ²MFS = Maximum Fuse or HACR Breaker Size ³SPPE = Single Point Power Entry

⁴Top Supply/Center Return ⁵Center Supply/Top Return

MCA & MFS are calculated at 240 volts on the "A" & "C" models. The 480 volts "D" models are calculated at 480 volts. This chart should only be used as a guideline for estimating conductor size and overcurrent protection. For the requirements of specific units, always refer to the data label on the unit.

1. MFS (Maximum Fuses Size) value listed is the maximum value as per UL 60335-2-40 calculations for MOCP (branch-circuit conductor sizes in this chart are based on this MOCP). The actual factory installed Overcurrent Protective Device (Circuit Breaker) in the models may be lower than the maximum UL 60335-2-40 allowable MOCP value, but still above the UL 60335-2-40 minimum calculated value or Minimum Circuit Ampacity (MCA) listed.
2. The end user shall size conductors based on the Single Point Power Entry (SPPE) - Minimum Circuit Ampacity. The service circuit breaker shall not be sized less than the minimum circuit ampacity associated to Single Point Power Entry value provided. The service circuit breaker shall also not be sized greater than the Maximum Fuse size associated to the Single Point Power Entry Value Provided.
3. While this electrical data is presented as a guide, it is important to electrically connect properly sized fuses and conductor wires in accordance with the National Electrical Code and all local codes.

Unit Load Amps (Heating) - EAH Heat Pumps with Ventilation Configurations:

C: Economizer, Outside Air with Pressure Relief

D: Motorized 2-Position Damper, up to 450 cfm of Outside Air w/Pressure Relief

E: Motorized Damper w/Pressure Relief & Independent Motorized Damper Control

N: Barometric Damper, up to 15% Outside Air

T: Title 24 Compliant Economizer & Controls

| Basic Model Number | Volts-Hz-Ph | Current Amps | | LOAD OF RESISTIVE HEATING - ELEMENTS ONLY (AMPS) (1) ALL HEATING ELEMENTS ARE ON A SEPARATE CIRCUIT (2) SHADED VALUES (12 & 15 kW) UTILIZE TWO CIRCUITS | | | | | | | | TOTAL MAXIMUM HEATING AMPS INCLUDES AMPS FROM MOTOR(S) THAT ARE LOCATED ON AN ELECTRICAL CIRCUIT THAT DOES NOT HAVE HEATERS | | | | | | | |
|--------------------|--------------|-----------------|------------------|---|------|------|------|------|-------|-------|-------|--|------|------|------|------|-------|-------|-------|
| | | HP ¹ | IBM ² | 4 kW | 5 kW | 6 kW | 8 kW | 9 kW | 10 kW | 12 kW | 15 kW | 4 kW | 5 kW | 6 kW | 8 kW | 9 kW | 10 kW | 12 kW | 15 kW |
| EAH1020HA | 208/230-60-1 | 16.6 | 2.8 | 16.7 | 20.8 | 25.0 | 33.3 | | 41.7 | | | 19.5 | 23.6 | 27.8 | 36.1 | | 44.5 | | |
| EAH1024HA | 208/230-60-1 | 18.2 | 2.8 | 16.7 | 20.8 | 25.0 | 33.3 | | 41.7 | | | 19.5 | 23.6 | 27.8 | 36.1 | | 44.5 | | |
| EAH1030HA | 208/230-60-1 | 21.1 | 4.1 | 16.7 | 20.8 | 25.0 | 33.3 | | 41.7 | 50.0 | 62.5 | 20.8 | 24.9 | 29.1 | 37.4 | | 45.8 | 54.1 | 66.6 |
| EAH1036HA | 208/230-60-1 | 22.3 | 4.1 | 16.7 | 20.8 | 25.0 | 33.3 | | 41.7 | 50.0 | 62.5 | 20.8 | 24.9 | 29.1 | 37.4 | | 45.8 | 54.1 | 66.6 |
| EAH1042HA | 208/230-60-1 | 28.0 | 4.1 | 16.7 | 20.8 | 25.0 | 33.3 | | 41.7 | 50.0 | 62.5 | 20.8 | 24.9 | 29.1 | 37.4 | | 45.8 | 54.1 | 66.6 |
| EAH1048HA | 208/230-60-1 | 31.8 | 4.1 | 16.7 | 20.8 | | | | 41.7 | 50.0 | 62.5 | 20.8 | 24.9 | | | | 45.8 | 54.1 | 66.6 |
| EAH1060HA | 208/230-60-1 | 37.9 | 6.0 | 16.7 | 20.8 | | | | 41.7 | 50.0 | 62.5 | 22.7 | 26.8 | | | | 47.7 | 56.0 | 68.5 |
| EAH1024HC | 208/230-60-3 | 14.6 | 2.8 | 9.6 | 12.0 | | | | 24.1 | 28.9 | 36.1 | 12.4 | 14.8 | | | | 26.9 | 31.7 | 38.9 |
| EAH1030HC | 208/230-60-3 | 20.4 | 4.1 | | | 14.4 | | 21.7 | | 28.9 | 36.1 | | | 18.5 | | 25.8 | | 33.0 | 40.2 |
| EAH1036HC | 208/230-60-3 | 19.8 | 4.1 | | | 14.4 | | 21.7 | | 28.9 | 36.1 | | | 18.5 | | 25.8 | | 33.0 | 40.2 |
| EAH1042HC | 208/230-60-3 | 22.2 | 4.1 | | | 14.4 | | 21.7 | | 28.9 | 36.1 | | | 18.5 | | 25.8 | | 33.0 | 40.2 |
| EAH1048HC | 208/230-60-3 | 22.2 | 4.1 | | | 14.4 | | 21.7 | | 28.9 | 36.1 | | | 18.5 | | 25.8 | | 33.0 | 40.2 |
| EAH1060HC | 208/230-60-3 | 30.9 | 6.0 | | | 14.4 | | 21.7 | | 28.9 | 36.1 | | | 20.4 | | 27.7 | | 34.9 | 42.1 |
| EAH1024HD | 460-60-3 | 8.3 | 1.4 | | | 7.2 | | 10.8 | | 14.4 | 18.0 | | | 8.6 | | 12.2 | | 15.8 | 19.4 |
| EAH1030HD | 460-60-3 | 8.9 | 2.1 | | | 7.2 | | 10.8 | | 14.4 | 18.0 | | | 9.3 | | 12.9 | | 16.5 | 20.1 |
| EAH1036HD | 460-60-3 | 9.6 | 2.1 | | | 7.2 | | 10.8 | | 14.4 | 18.0 | | | 9.3 | | 12.9 | | 16.5 | 20.1 |
| EAH1042HD | 460-60-3 | 10.5 | 2.1 | | | 7.2 | | 10.8 | | 14.4 | 18.0 | | | 9.3 | | 12.9 | | 16.5 | 20.1 |
| EAH1048HD | 460-60-3 | 10.7 | 2.1 | | | 7.2 | | 10.8 | | 14.4 | 18.0 | | | 9.3 | | 12.9 | | 16.5 | 20.1 |
| EAH1060HD | 460-60-3 | 14.5 | 3.0 | | | 7.2 | | 10.8 | | 14.4 | 18.0 | | | 10.2 | | 13.8 | | 17.4 | 21.0 |
| EAH1024HZ | 575-60-3 | 6.3 | 1.1 | | | 6.0 | | 9.0 | | 12.0 | 15.1 | | | 7.1 | | 10.1 | | 13.1 | 16.2 |
| EAH1030HZ | 575-60-3 | 7.5 | 1.6 | | | 6.0 | | 9.0 | | 12.0 | 15.1 | | | 7.6 | | 10.6 | | 13.6 | 16.7 |
| EAH1036HZ | 575-60-3 | 7.5 | 1.6 | | | 6.0 | | 9.0 | | 12.0 | 15.1 | | | 7.6 | | 10.6 | | 13.6 | 16.7 |
| EAH1042HZ | 575-60-3 | 8.9 | 1.6 | | | 6.0 | | 9.0 | | 12.0 | 15.1 | | | 7.6 | | 10.6 | | 13.6 | 16.7 |
| EAH1048HZ | 575-60-3 | 9.6 | 1.6 | | | 6.0 | | 9.0 | | 12.0 | 15.1 | | | 7.6 | | 10.6 | | 13.6 | 16.7 |
| EAH1060HZ | 575-60-3 | 12.6 | 2.4 | | | 6.0 | | 9.0 | | 12.0 | 15.1 | | | 8.4 | | 11.4 | | 14.4 | 17.5 |

¹HP = Heat Pump Unit Amps (includes Indoor Motor amps) ²IBM = Indoor Blower Motor

Heating kW is rated at 240 volts on the 208-230v. (HPA & HPC) models. Derate heater output by 25% for operation at 208 volts. Heating kW is rated at 480 volts on the HPD models.

Total heating amps for single phase units with two circuits (#1 and #2) includes both circuits. Total heating and cooling amps includes all motors. Three phase models contain single phase motor loads. Values shown are maximum phase loads. Loads are not equally balanced on each phase.

Eubank EAH 2-Stage Heat Pump Certified Ratings & Performance

Efficiency and Capacity Ratings at ANSI/AHRI Standard 390 - EAH Heat Pumps

| Model Number | EAH2024H | | | EAH2030H | | | EAH2036H | | | EAH2042H | | | EAH2048H | | | EAH2060H | | |
|--|----------|---|---|----------|---|---|----------|---|---|----------|---|---|----------|---|---|----------|---|---|
| | A | C | D | A | C | D | A | C | D | A | C | D | A | C | D | A | C | D |
| Cooling BTUH¹ | 20,600 | | | 29,000 | | | 33,000 | | | 40,000 | | | 46,000 | | | 56,000 | | |
| EER² | 11 | | | 11 | | | 11 | | | 11 | | | 11 | | | 11 | | |
| IPLV³ | 14.3 | | | 15.5 | | | 14.3 | | | 14.3 | | | 14 | | | 14.8 | | |
| High Temperature Heating⁴ | 21,000 | | | 25,000 | | | 29,000 | | | 35,400 | | | 42,000 | | | 50,500 | | |
| High Temperature COP⁵ | 3.3 | | | 3.3 | | | 3.3 | | | 3.3 | | | 3.3 | | | 3.3 | | |
| Rated Indoor Air Flow (CFM⁶) | 950 | | | 1,050 | | | 1,180 | | | 1,350 | | | 1,700 | | | 1,750 | | |

¹Cooling is rated at 95°F (35°C) outdoor and 80°F DB/67°F WB (26.5°C DB/19.5°C WB) return air.

²EER = Energy Efficiency Ratio

³IPLV = Integrated Part Load Value

⁴High Temperature Heating & COP are rated at 47°F DB/43°F WB (8.3°C DB/6.1°C WB) outdoor and 70°F (21.1°C) return air.

⁵COP = Coefficient of Performance

⁶CFM = Cubic Feet per Minute

Ratings are with no outside air. Performance will be affected by altitude. Ratings are at 230 volts for 208/230 volt units ("A" & "C" models) and 460 volts for "D" models. Operation of units at different voltage from that of the rating point will affect performance and air flow.

Sensible Total Heat Ratio @ 95°F (35°C) Outside Air DB - EAH Heat Pumps

| Model Number | EAH2024H | | | EAH2030H | | | EAH2036H | | | EAH2042H | | | EAH2048H | | | EAH2060H | | |
|---|----------|---|---|----------|---|---|----------|---|---|----------|---|---|----------|---|---|----------|---|---|
| | A | C | D | A | C | D | A | C | D | A | C | D | A | C | D | A | C | D |
| Total Capacity | 20,600 | | | 29,000 | | | 33,000 | | | 40,000 | | | 46,000 | | | 56,000 | | |
| Sensible Heat Ratio | 0.80 | | | 0.70 | | | 0.70 | | | 0.70 | | | 0.70 | | | 0.70 | | |
| Sensible Capacity | 16,500 | | | 20,300 | | | 23,100 | | | 27,200 | | | 31,000 | | | 39,200 | | |
| Rated Air Flow (CFM¹) | 950 | | | 1,050 | | | 1,180 | | | 1,350 | | | 1,700 | | | 1,750 | | |

¹CFM=Cubic Feet per Minute

Sensible Heat Ratios based upon ANSI/AHRI std. 390 outdoor conditions of 95°F (35°C) outdoor and 80°F DB/67°F WB (26.5°C DB/19.5°C WB) return air.

Cooling Performance (BTUH) at Various Outdoor Temperatures - EAH Heat Pumps

| Model Number | Outdoor Temperature | | | | | | | | | | | |
|-----------------|---------------------|-------------|-----------|-----------|-----------|------------|--------------|--------------|------------|------------|------------|------------|
| | 75°F/24°C | 80°F/26.5°C | 85°F/29°C | 90°F/32°C | 95°F/35°C | 100°F/38°C | 105°F/40.5°C | 110°F/43.3°C | 115°F/46°C | 120°F/49°C | 125°F/52°C | 130°F/54°C |
| EAH2024H | 23,896 | 23,072 | 22,484 | 21,424 | 20,600 | 19,776 | 18,952 | 18,128 | 17,716 | 16,480 | 15,656 | 14,832 |
| EAH2030H | 33,640 | 32,480 | 31,320 | 30,160 | 29,000 | 27,840 | 26,680 | 25,520 | 24,940 | 23,200 | 22,040 | 20,880 |
| EAH2036H | 39,440 | 38,080 | 36,720 | 35,360 | 34,000 | 32,640 | 31,280 | 29,920 | 29,240 | 27,200 | 25,840 | 24,480 |
| EAH2042H | 46,400 | 44,800 | 43,200 | 41,600 | 40,000 | 38,400 | 36,800 | 35,200 | 34,400 | 32,000 | 30,400 | 28,800 |
| EAH2048H | 53,360 | 51,520 | 49,680 | 47,840 | 46,000 | 44,160 | 42,320 | 40,480 | 39,560 | 36,800 | 34,960 | 33,120 |
| EAH2060H | 64,900 | 62,700 | 60,500 | 58,200 | 56,000 | 53,700 | 51,500 | 49,300 | 48,100 | 44,800 | 42,600 | 40,300 |

Based upon ANSI/AHRI std. 390 return air conditions of 80°F DB/67°F WB (26.5°C DB/19.5°C WB). Return air at rated air flow.

Heating Performance (BTUH) at Various Outdoor Temperatures - EAH Heat Pumps

| Model Number | Outdoor Temperature | | | | | | | | | |
|-----------------|---------------------|-------------|-------------|-------------|------------|------------|-----------|-------------|-------------|--|
| | 10°F/-12.2°C | 17°F/-8.3°C | 20°F/-6.7°C | 30°F/-1.1°C | 40°F/4.4°C | 47°F/8.3°C | 50°F/10°C | 60°F/15.6°C | 70°F/21.1°C | |
| EAH2024H | 11,560 | 13,600 | 14,340 | 16,930 | 19,150 | 21,000 | 21,630 | 22,575 | 23,625 | |
| EAH2030H | 15,130 | 17,800 | 18,520 | 21,040 | 23,200 | 25,000 | 25,750 | 26,875 | 28,125 | |
| EAH2036H | 15,810 | 18,600 | 19,740 | 23,730 | 27,150 | 30,000 | 30,900 | 32,250 | 33,750 | |
| EAH2042H | 18,700 | 22,000 | 23,340 | 28,030 | 32,050 | 35,400 | 36,462 | 38,055 | 39,825 | |
| EAH2048H | 20,400 | 24,000 | 25,800 | 32,100 | 37,500 | 42,000 | 43,260 | 45,150 | 47,250 | |
| EAH2060H | 29,500 | 34,700 | 36,300 | 41,800 | 46,500 | 50,500 | 51,900 | 54,300 | 56,800 | |

Based upon ANSI/AHRI std. 390 return air conditions of 70°F DB (21.1°C DB). Return air at rated air flow.

Electrical Characteristics - Compressor, Fan, Ventilation & Blower Motors EAH Heat Pumps with 2-Stage Compressor

| Basic Model | Compressor | | | | Outdoor Fan Motor | | | | Indoor Blower Motor | | | | Ventilation GreenWheel AMPS | | |
|-------------|------------|--------------|------------------|------------------|-------------------|------------------|------------------|-----------------|---------------------|------------------|------------------|-----------------|-----------------------------|------------------|-----------------|
| | Type | Volts-Hz-Ph | RLA ¹ | LRA ² | Volts-Hz-PH | RPM ³ | FLA ⁴ | HP ⁵ | Volts-Hz-PH | RPM ³ | FLA ⁴ | HP ⁵ | OAM ⁶ | EXM ⁷ | WD ⁸ |
| EAH2024HA | Scroll | 208/230-60-1 | 10.3 | 62.0 | 208/230-60-1 | 1200 | 3.5 | 1/3 | 208/230-60-1 | 1050 | 2.8 | 1/3 | 1.0 | 1.0 | 0.2 |
| EAH2030HA | | 208/230-60-1 | 14.6 | 90.0 | 208/230-60-1 | 1200 | 3.5 | 1/3 | 208/230-60-1 | 1050 | 4.1 | 1/2 | 1.0 | 1.0 | 0.2 |
| EAH2036HA | | 208/230-60-1 | 14.6 | 90.0 | 208/230-60-1 | 1200 | 3.5 | 1/3 | 208/230-60-1 | 1050 | 4.1 | 1/2 | 1.0 | 1.0 | 0.2 |
| EAH2042HA | | 208/230-60-1 | 18.2 | 106.0 | 208/230-60-1 | 1200 | 5.3 | 1/2 | 208/230-60-1 | 1050 | 4.1 | 1/2 | 1.0 | 1.0 | 0.2 |
| EAH2048HA | | 208/230-60-1 | 18.3 | 138.0 | 208/230-60-1 | 1200 | 5.3 | 1/2 | 208/230-60-1 | 1050 | 4.1 | 1/2 | 1.0 | 1.0 | 0.2 |
| EAH2060HA | | 208/230-60-1 | 25.2 | 147.3 | 208/230-60-1 | 1200 | 5.3 | 1/2 | 208/230-60-1 | 1050 | 6.0 | 3/4 | 1.0 | 1.0 | 0.2 |
| EAH2024HC | Scroll | 208/230-60-3 | 6.3 | 56.0 | 208/230-60-1 | 1200 | 3.5 | 1/3 | 208/230-60-1 | 1050 | 2.8 | 1/3 | 1.0 | 1.0 | 0.2 |
| EAH2030HC | | 208/230-60-3 | 7.9 | 66.0 | 208/230-60-1 | 1200 | 3.5 | 1/3 | 208/230-60-1 | 1050 | 4.1 | 1/2 | 1.0 | 1.0 | 0.2 |
| EAH2036HC | | 208/230-60-3 | 9.9 | 82.0 | 208/230-60-1 | 1200 | 3.5 | 1/3 | 208/230-60-1 | 1050 | 4.1 | 1/2 | 1.0 | 1.0 | 0.2 |
| EAH2042HC | | 208/230-60-3 | 11.5 | 114.0 | 208/230-60-1 | 1200 | 5.3 | 1/2 | 208/230-60-1 | 1050 | 4.1 | 1/2 | 1.0 | 1.0 | 0.2 |
| EAH2048HC | | 208/230-60-3 | 11.9 | 112.0 | 208/230-60-1 | 1200 | 5.3 | 1/2 | 208/230-60-1 | 1050 | 4.1 | 1/2 | 1.0 | 1.0 | 0.2 |
| EAH2060HC | | 208/230-60-3 | 13.8 | 150.0 | 208/230-60-1 | 1200 | 5.3 | 1/2 | 208/230-60-1 | 1050 | 6.0 | 3/4 | 1.0 | 1.0 | 0.2 |
| EAH2024HD | Scroll | 460-60-3 | 3.8 | 29.0 | 208/230-60-1 | 1200 | 3.5 | 1/3 | 208/230-60-1 | 1050 | 2.8 | 1/3 | 1.0 | 1.0 | 0.2 |
| EAH2030HD | | 460-60-3 | 4.8 | 39.0 | 208/230-60-1 | 1200 | 3.5 | 1/3 | 208/230-60-1 | 1050 | 4.1 | 1/2 | 1.0 | 1.0 | 0.2 |
| EAH2036HD | | 460-60-3 | 4.8 | 44.3 | 208/230-60-1 | 1200 | 3.5 | 1/3 | 208/230-60-1 | 1050 | 4.1 | 1/2 | 1.0 | 1.0 | 0.2 |
| EAH2042HD | | 460-60-3 | 6.5 | 56.0 | 208/230-60-1 | 1200 | 5.3 | 1/2 | 208/230-60-1 | 1050 | 4.1 | 1/2 | 1.0 | 1.0 | 0.2 |
| EAH2048HD | | 460-60-3 | 6.8 | 61.8 | 208/230-60-1 | 1200 | 5.3 | 1/2 | 208/230-60-1 | 1050 | 4.1 | 1/2 | 1.0 | 1.0 | 0.2 |
| EAH2060HD | | 460-60-3 | 6.9 | 58.0 | 208/230-60-1 | 1200 | 5.3 | 1/2 | 208/230-60-1 | 1050 | 6.0 | 3/4 | 1.0 | 1.0 | 0.2 |

¹RLA = Rated Load Amps ²LRA = Locked Rotor Amps ³RPM = Revolutions per Minute ⁴FLA = Full Load Amps
⁵HP = Horsepower ⁶OAM = Outside Air Mover ⁷EXM = Exhaust Air Mover ⁸WD = Wheel Drive Motor
 The 460 volt units have a step down transformer for the 230 volt motors.

EAH Heat Pumps Summary Electrical Ratings (Wire and HACR Circuit Breaker Sizing) - Ventilation Configuration:

C: Economizer, Outside air with Pressure Relief

D: Motorized 2-Position Damper, up to 450 cfm of outside air w/Pressure Relief

E: Motorized Damper w/Pressure Relief & Independent Motorized Damper Control

N: Barometric Damper, up to 15% outside air

T: Title 24 Compliant Economizer & Controls

| Electric Heat | | 000 = None | | 040 = 4 kw | | 050 = 5 kw | | 060 = 6 kw | | 080 = 8 kw | | 090 = 9 kw | | 100 = 10 kw | | 120 = 12 kw | | 150 = 15 kw | |
|---------------|--------------|-------------------|------------------|-------------------|------------------|-------------------|------------------|-------------------|------------------|-------------------|------------------|-------------------|------------------|-------------------|------------------|-------------------|------------------|-------------------|------------------|
| Basic Model | Volts-Hz-Ph | SPPE ³ | | SPPE ³ | | SPPE ³ | | SPPE ³ | | SPPE ³ | | SPPE ³ | | SPPE ³ | | SPPE ³ | | SPPE ³ | |
| | | MCA ¹ | MFS ² | MCA ¹ | MFS ² | MCA ¹ | MFS ² | MCA ¹ | MFS ² | MCA ¹ | MFS ² | MCA ¹ | MFS ² | MCA ¹ | MFS ² | MCA ¹ | MFS ² | MCA ¹ | MFS ² |
| EAH2024HA | 208/230-60-1 | 19.2 | 25 | 40.0 | 45 | 45.2 | 50 | 50.4 | 60 | 60.8 | 70 | | | 71.3 | 80 | | | | |
| EAH2030HA | 208/230-60-1 | 25.9 | 40 | 46.7 | 50 | 51.9 | 60 | 57.1 | 60 | 67.5 | 70 | | | 77.9 | 80 | | | | |
| EAH2036HA | 208/230-60-1 | 25.9 | 40 | 46.7 | 50 | 51.9 | 60 | 57.1 | 60 | 67.5 | 70 | | | 77.9 | 80 | | | | |
| EAH2042HA | 208/230-60-1 | 32.2 | 50 | 53.0 | 60 | 58.2 | 70 | 63.4 | 70 | 73.8 | 80 | | | 84.2 | 90 | 94.7 | 100 | 110.3 | 125 |
| EAH2048HA | 208/230-60-1 | 32.3 | 50 | 53.1 | 60 | 58.3 | 70 | 63.5 | 70 | 73.9 | 80 | | | 84.4 | 90 | 94.8 | 100 | 110.4 | 125 |
| EAH2060HA | 208/230-60-1 | 42.8 | 60 | 63.6 | 80 | 68.8 | 80 | 74.1 | 90 | 84.5 | 100 | | | 94.9 | 100 | 105.3 | 110 | 120.9 | 125 |
| EAH2024HC | 208/230-60-3 | 14.2 | 20 | | | | | 32.2 | 35 | | | 41.2 | 45 | | | 50.3 | 60 | 59.3 | 60 |
| EAH2030HC | 208/230-60-3 | 17.5 | 25 | | | | | 35.5 | 40 | | | 44.5 | 45 | | | 53.6 | 60 | 62.6 | 70 |
| EAH2036HC | 208/230-60-3 | 20.0 | 25 | | | | | 38.0 | 40 | | | 47.0 | 50 | | | 56.1 | 60 | 65.1 | 70 |
| EAH2042HC | 208/230-60-3 | 23.8 | 35 | | | | | 41.8 | 45 | | | 50.8 | 60 | | | 59.9 | 60 | 68.9 | 70 |
| EAH2048HC | 208/230-60-3 | 24.3 | 35 | | | | | 42.3 | 50 | | | 51.3 | 60 | | | 60.4 | 70 | 69.4 | 70 |
| EAH2060HC | 208/230-60-3 | 28.6 | 40 | | | | | 46.6 | 50 | | | 55.6 | 60 | | | 64.6 | 70 | 73.7 | 80 |
| EAH2024HD | 460-60-3 | 7.9 | 15 | | | | | 16.9 | 20 | | | 21.4 | 25 | | | 25.9 | 30 | 30.5 | 35 |
| EAH2030HD | 460-60-3 | 9.8 | 15 | | | | | 18.8 | 20 | | | 23.3 | 25 | | | 27.8 | 30 | 32.4 | 35 |
| EAH2036HD | 460-60-3 | 9.8 | 15 | | | | | 18.8 | 20 | | | 23.3 | 25 | | | 27.8 | 30 | 32.4 | 35 |
| EAH2042HD | 460-60-3 | 12.8 | 15 | | | | | 21.8 | 25 | | | 26.4 | 30 | | | 30.9 | 35 | 35.4 | 40 |
| EAH2048HD | 460-60-3 | 13.2 | 15 | | | | | 22.2 | 25 | | | 26.7 | 30 | | | 31.2 | 35 | 35.8 | 40 |
| EAH2060HD | 460-60-3 | 14.3 | 20 | | | | | 23.3 | 25 | | | 27.8 | 30 | | | 32.3 | 35 | 36.8 | 40 |

S-Circuit - The user can move a pin on the board to control whether the electric heat will operate simultaneously with the compressor (S Circuit – NO) or will not run simultaneously with the compressor (S Circuit – Yes).

¹MCA = Minimum Circuit Ampacity (Wiring Size Amps) ²MFS = Maximum Fuse or HACR Breaker Size ³SPPE = Single Point Power Entry

⁴Top Supply/Center Return ⁵Center Supply/Top Return

MCA & MFS are calculated at 240 volts on the "A" & "C" models. The 480 volts "D" models are calculated at 480 volts. This chart should only be used as a guideline for estimating conductor size and overcurrent protection. For the requirements of specific units, always refer to the data label on the unit.

1. MFS (Maximum Fuses Size) value listed is the maximum value as per UL 60335-2-40 calculations for MOCP (branch-circuit conductor sizes in this chart are based on this MOCP). The actual factory installed Overcurrent Protective Device (Circuit Breaker) in the models may be lower than the maximum UL 60335-2-40 allowable MOCP value, but still above the UL 60335-2-40 minimum calculated value or Minimum Circuit Ampacity (MCA) listed.
2. The end user shall size conductors based on the Single Point Power Entry (SPPE) - Minimum Circuit Ampacity. The service circuit breaker shall not be sized less than the minimum circuit ampacity associated to Single Point Power Entry value provided. The service circuit breaker shall also not be sized greater than the Maximum Fuse size associated to the Single Point Power Entry Value Provided.

While this electrical data is presented as a guide, it is important to electrically connect properly sized fuses and conductor wires in accordance with the National Electrical Code and all local codes.

Unit Load Amps (Heating) - EAH Heat Pumps with Ventilation Configurations:

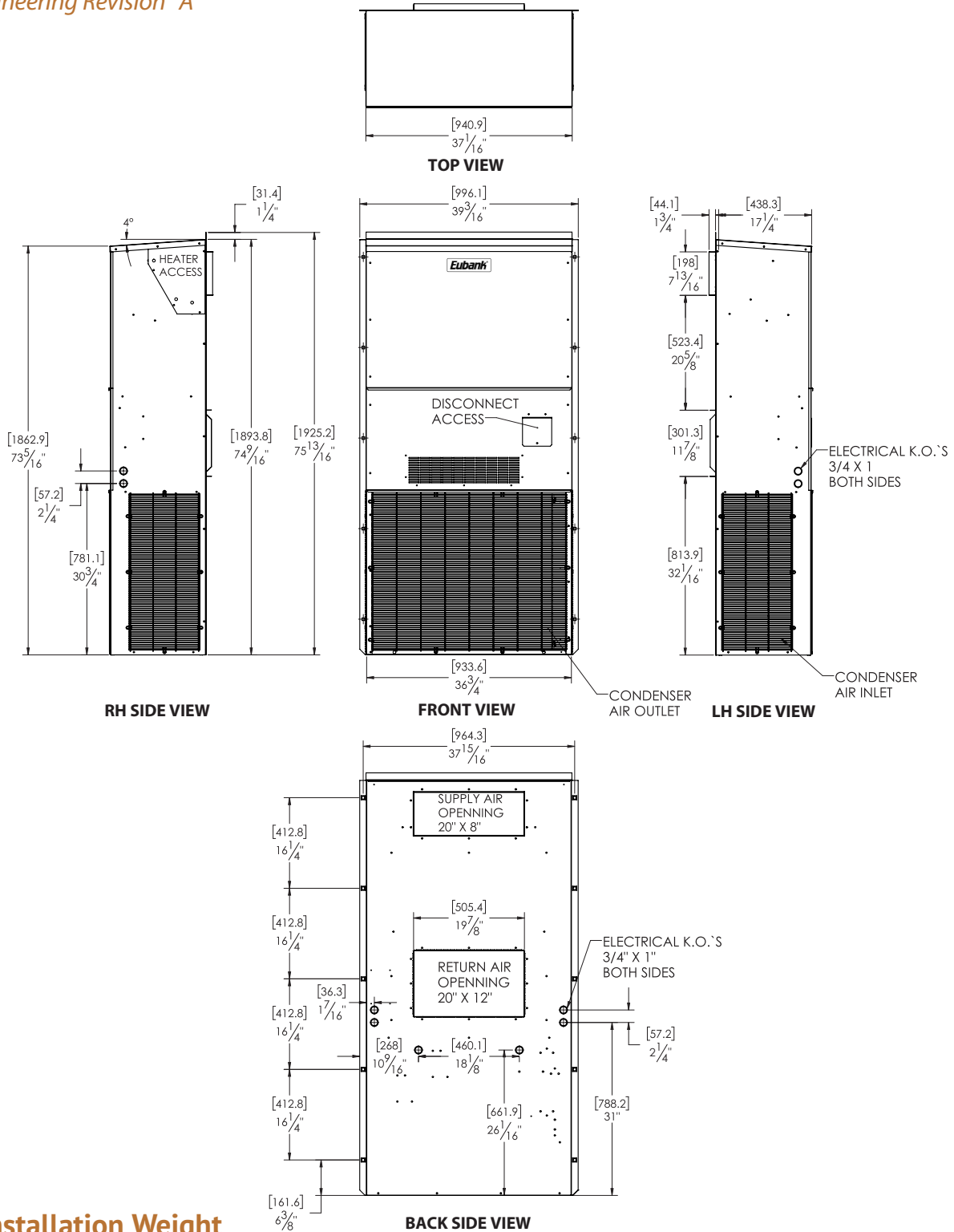
C: Economizer, Outside Air with Pressure Relief
 D: Motorized 2-Position Damper, up to 450 cfm of Outside Air w/Pressure Relief
 E: Motorized Damper w/Pressure Relief & Independent Motorized Damper Control
 N: Barometric Damper, up to 15% Outside Air
 T: Title 24 Compliant Economizer & Controls

| Basic Model | Volts-Hz-Ph | Current Amps | | LOAD OF RESISTIVE HEATING - ELEMENTS ONLY (AMPS) (1) ALL HEATING ELEMENTS ARE ON A SEPARATE CIRCUIT (2) SHADED VALUES (12 & 15 kW) UTILIZE TWO CIRCUITS | | | | | | | | TOTAL MAXIMUM HEATING AMPS INCLUDES AMPS FROM MOTOR(S) THAT ARE LOCATED ON AN ELECTRICAL CIRCUIT THAT DOES NOT HAVE HEATERS | | | | | | | |
|-------------|--------------|-----------------|------------------|---|------|------|------|------|-------|-------|-------|--|------|------|------|------|-------|-------|-------|
| | | HP ¹ | IBM ² | 4 kW | 5 kW | 6 kW | 8 kW | 9 kW | 10 kW | 12 kW | 15 kW | 4 kW | 5 kW | 6 kW | 8 kW | 9 kW | 10 kW | 12 kW | 15 kW |
| EAH2024HA | 208/230-60-1 | 16.6 | 2.8 | 16.7 | 20.8 | 25.0 | 33.3 | | 41.7 | | | 19.5 | 23.6 | 27.8 | 36.1 | | 44.5 | | |
| EAH2030HA | 208/230-60-1 | 22.2 | 4.1 | 16.7 | 20.8 | 25.0 | 33.3 | | 41.7 | | | 20.8 | 24.9 | 29.1 | 37.4 | | 45.8 | | |
| EAH2036HA | 208/230-60-1 | 22.2 | 4.1 | 16.7 | 20.8 | 25.0 | 33.3 | | 41.7 | | | 20.8 | 24.9 | 29.1 | 37.4 | | 45.8 | | |
| EAH2042HA | 208/230-60-1 | 27.6 | 4.1 | 16.7 | 20.8 | 25.0 | 33.3 | | 41.7 | 50.0 | 62.5 | 20.8 | 24.9 | 29.1 | 37.4 | | 45.8 | 54.1 | 66.6 |
| EAH2048HA | 208/230-60-1 | 27.7 | 4.1 | 16.7 | 20.8 | 25.0 | 33.3 | | 41.7 | 50.0 | 62.5 | 20.8 | 24.9 | 29.1 | 37.4 | | 45.8 | 54.1 | 66.6 |
| EAH2060HA | 208/230-60-1 | 36.5 | 6.0 | 16.7 | 20.8 | 25.0 | 33.3 | | 41.7 | 50.0 | 62.5 | 22.7 | 26.8 | 31.0 | 39.3 | | 47.7 | 56.0 | 68.5 |
| EAH2024HC | 208/230-60-3 | 12.6 | 2.8 | | | 14.4 | | 21.7 | | 28.9 | 36.1 | | | 17.2 | | 24.5 | | 31.7 | 38.9 |
| EAH2030HC | 208/230-60-3 | 15.5 | 4.1 | | | 14.4 | | 21.7 | | 28.9 | 36.1 | | | 18.5 | | 25.8 | | 33.0 | 40.2 |
| EAH2036HC | 208/230-60-3 | 17.5 | 4.1 | | | 14.4 | | 21.7 | | 28.9 | 36.1 | | | 18.5 | | 25.8 | | 33.0 | 40.2 |
| EAH2042HC | 208/230-60-3 | 20.9 | 4.1 | | | 14.4 | | 21.7 | | 28.9 | 36.1 | | | 18.5 | | 25.8 | | 33.0 | 40.2 |
| EAH2048HC | 208/230-60-3 | 21.3 | 4.1 | | | 14.4 | | 21.7 | | 28.9 | 36.1 | | | 18.5 | | 25.8 | | 33.0 | 40.2 |
| EAH2060HC | 208/230-60-3 | 25.1 | 6.0 | | | 14.4 | | 21.7 | | 28.9 | 36.1 | | | 20.4 | | 27.7 | | 34.9 | 42.1 |
| EAH2024HD | 460-60-3 | 7.0 | 1.4 | | | 7.2 | | 10.8 | | 14.4 | 18.0 | | | 8.6 | | 12.2 | | 15.8 | 19.4 |
| EAH2030HD | 460-60-3 | 8.6 | 2.1 | | | 7.2 | | 10.8 | | 14.4 | 18.0 | | | 9.3 | | 12.9 | | 16.5 | 20.1 |
| EAH2036HD | 460-60-3 | 8.6 | 2.1 | | | 7.2 | | 10.8 | | 14.4 | 18.0 | | | 9.3 | | 12.9 | | 16.5 | 20.1 |
| EAH2042HD | 460-60-3 | 11.2 | 2.1 | | | 7.2 | | 10.8 | | 14.4 | 18.0 | | | 9.3 | | 12.9 | | 16.5 | 20.1 |
| EAH2048HD | 460-60-3 | 11.5 | 2.1 | | | 7.2 | | 10.8 | | 14.4 | 18.0 | | | 9.3 | | 12.9 | | 16.5 | 20.1 |
| EAH2060HD | 460-60-3 | 12.6 | 3.0 | | | 7.2 | | 10.8 | | 14.4 | 18.0 | | | 10.2 | | 13.8 | | 17.4 | 21.0 |

¹HP = Heat Pump Unit Amps (includes Indoor Motor amps) ²IBM = Indoor Blower Motor
 Heating kW is rated at 240 volts on the 208-230v. (HPA & HPC) models. Derate heater output by 25% for operation at 208 volts. Heating kW is rated at 480 volts on the HPD models.
 Total heating amps for single phase units with two circuits (#1 and #2) includes both circuits. Total heating and cooling amps includes all motors. Three phase models contain single phase motor loads. Values shown are maximum phase loads. Loads are not equally balanced on each phase.

Dimensional Data: EAH1020H/1024H & EAH2024H

Engineering Revision "A"



Installation Weight

| EAH1020H/1024H & EAH2024H | Base | w/Economizer | w/3 Phase | w/Economizer & 3 Phase | Max Shipping |
|---------------------------|------|--------------|-----------|------------------------|--------------|
| Pounds | 337 | 357 | 356 | 376 | 419 |
| Kilograms | 153 | 162 | 161 | 171 | 190 |

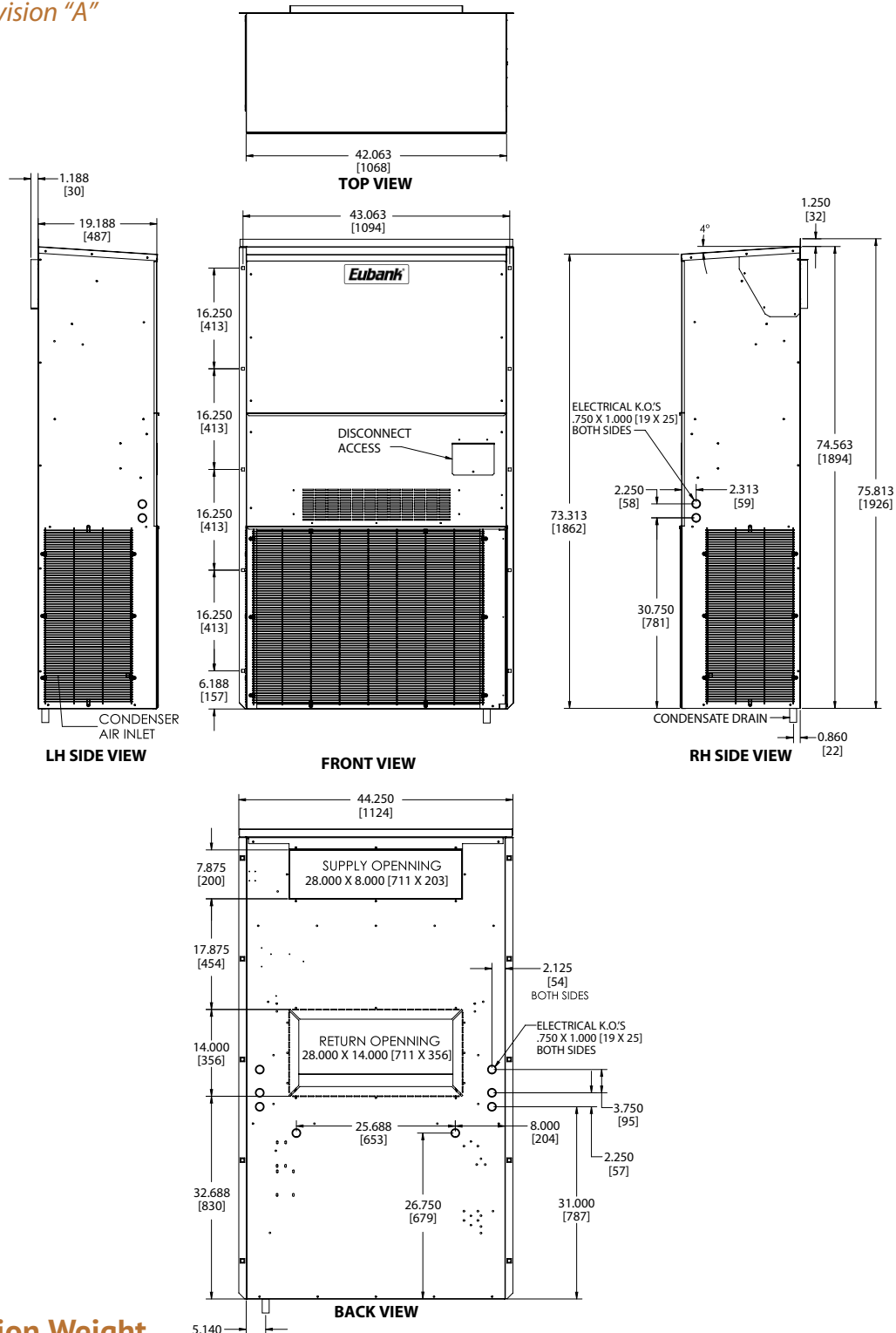
Filter Size

| EAH1020H/1024H & EAH2024H | Inches | Millimeters | Part Number | Filters Per Unit | MERV Rating |
|---------------------------|-------------|----------------|-------------|------------------|-------------|
| Return Air Filter | 16 x 25 x 2 | 406 x 635 x 51 | 80137 | 1 | 8 (STD) |

Note: All overall outside dimensions are given with +/- .250" (6mm) tolerance.

Dimensional Data: EAH1030H/1036H & EAH2030H/2036H

Engineering Revision "A"



Installation Weight

| EAH1030H/1036H & EAH2030H/2036H | Base | w/Economizer | w/3 Phase | w/Economizer & 3 Phase | Max Shipping |
|---------------------------------|------|--------------|-----------|------------------------|--------------|
| Pounds | 397 | 419 | 416 | 438 | 470 |
| Kilograms | 180 | 190 | 189 | 199 | 213 |

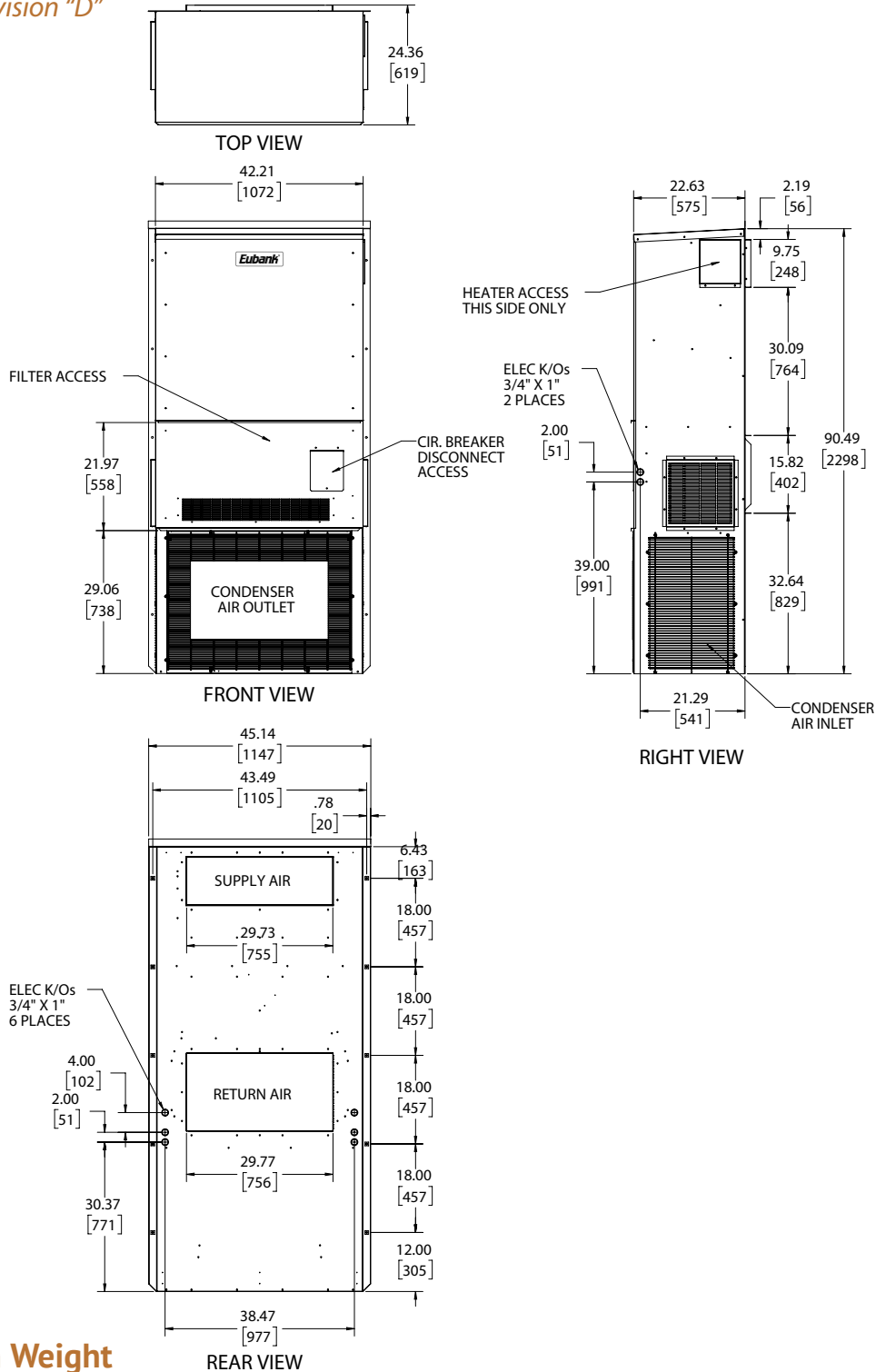
Filter Size

| EAH1030H/1036H & EAH2030H/2036H | Inches | Millimeters | Part Number | Filters Per Unit | MERV Rating |
|---------------------------------|-------------|----------------|-------------|------------------|-------------|
| Return Air Filter | 18 x 30 x 2 | 457 x 762 x 51 | 93184 | 1 | 8 (STD) |

Note: All overall outside dimensions are given with +/- .250" (6mm) tolerance.

Dimensional Data: EAH1042H/1048H & EAH2042H/2048H

Engineering Revision "D"



Installation Weight

| EAH1042H/EAH1048H & EAH2042H EAH2048H | Base | w/Economizer | w/3 Phase | w/Economizer & 3 Phase | Max Shipping |
|---------------------------------------|------|--------------|-----------|------------------------|--------------|
| Pounds | 469 | 492 | 522 | 545 | 571 |
| Kilograms | 213 | 223 | 237 | 247 | 259 |

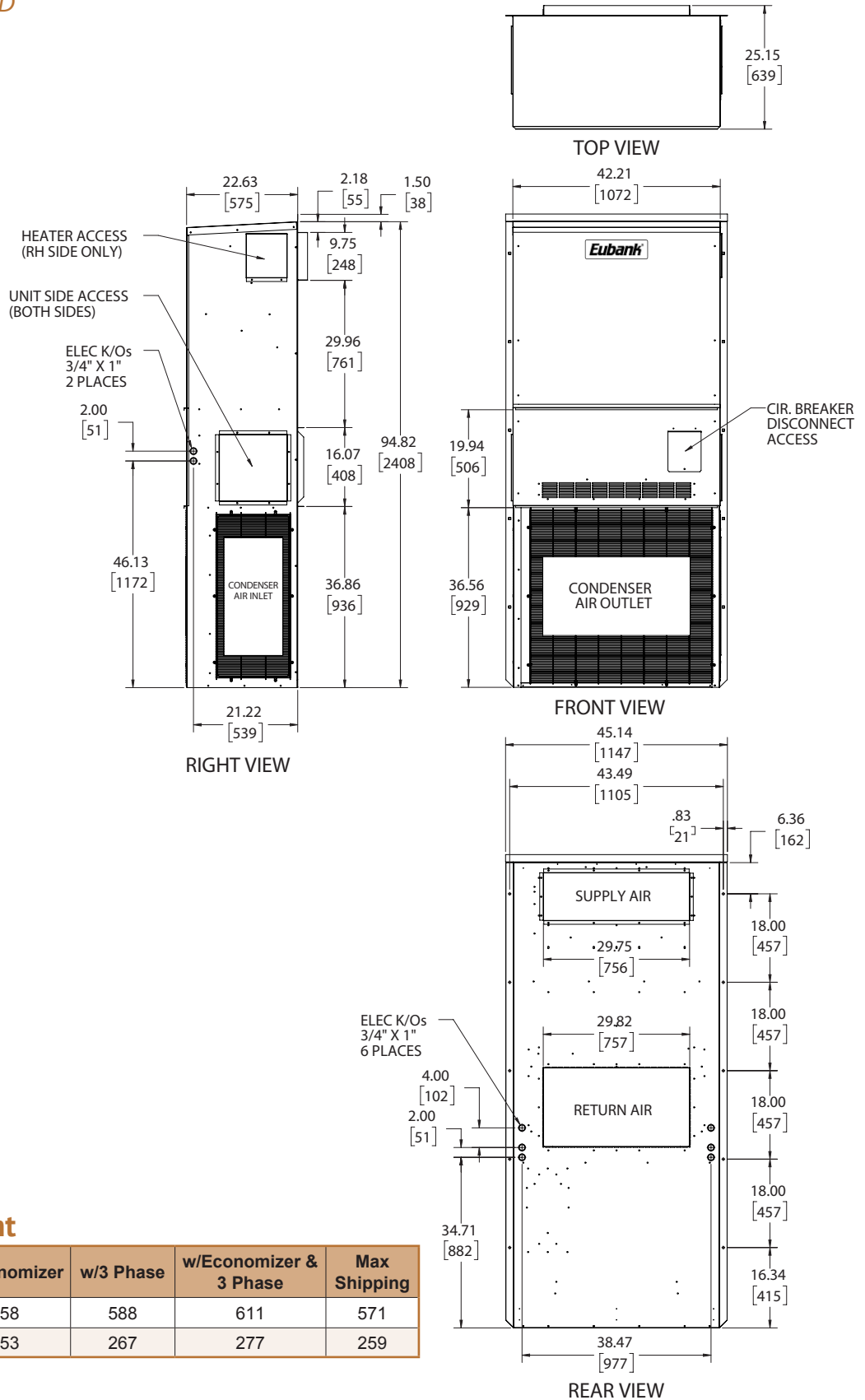
Filter Size

| EAH1042H, EAH1048H & EAH2042H, EAH2048H | Inches | Millimeters | Part Number | Filters Per Unit | MERV Rating |
|---|--------------|----------------|-------------|------------------|-------------|
| Return Air Filter | 36½ x 22 x 2 | 927 x 559 x 51 | 80162 | 1 | 8 (STD) |

Note: All overall outside dimensions are given with +/- .250" (6mm) tolerance.

Dimensional Data: EAH1060H & EAH2060H

Engineering Revision "D"



Installation Weight

| EAH1060H EAH2060H | Base | w/Economizer | w/3 Phase | w/Economizer & 3 Phase | Max Shipping |
|----------------------|------|--------------|-----------|---------------------------|-----------------|
| Pounds | 535 | 558 | 588 | 611 | 571 |
| Kilograms | 243 | 253 | 267 | 277 | 259 |

Filter Size

| EAH1060H & EAH2060H | Inches | Millimeters | Part Number | Filters Per Unit | MERV Rating |
|--------------------------|--------------|----------------|-------------|------------------|-------------|
| Return Air Filter | 36½ x 22 x 2 | 927 x 559 x 51 | 80162 | 1 | 8 (STD) |

Note: All overall outside dimensions are given with +/- .250" (6mm) tolerance.

Notes

Notes

Notes

Notes

Please consult the Eubank® website at www.EubankWallmount.com for the latest product literature. Detailed dimensional data is available upon request. A complete warranty statement can be found in each product's Installation/Operation Manual, on our website or by contacting Eubank at 229-273-3636. As part of the Eubank continuous improvement program, specifications are subject to change without notice.



P.O. Box 400 • Cordele, GA 31010
156 Seedling Drive • Cordele, GA 31015
Ph: 229-273-3636 • Fax: 229-273-5154
Email: EubankOrders@airxcs.com • Internet: www.EubankWallmount.com

